

## Installation and use of the Weidmüller Router-Search-Utility V 2.04

The software tool *Weidmüller Router-Search-Utility* can be used to find Weidmüller Routers and detect their IP addresses within a switched network. This software is very helpful if you don't know the current IP address of a Router. This can e.g. happen in cases that you have forgotten the current IP configuration or you have lost the router access in case of configuring an unintended IP address. The main features of the software are

- ▶ Detecting a router and displaying the parameters IP address, Subnet mask, MAC address, Serial number, Device name, Device location and Firmware version
- ▶ Change the IP address of a detected router
- ▶ Open the web interface of a detected router

You can download the *Weidmüller Router-Search-Utility* from the Weidmüller web site using the following path:

1. Open [www.weidmueller.com/IE](http://www.weidmueller.com/IE)
2. Select section "Industrial Ethernet" → „Software“
3. Select category "Additional Software (Configuration utilities, Drivers and MIB-files)"
4. Select category "Industrial Security Router (IE-SR-2GT-LAN, ...3G/UMTS)"
5. Download ***Weidmueller\_RouterSearchUtility\_V2.04\_incl\_dotNet40.zip*** (with included Microsoft .NET Framework 4.0) or download ***Weidmueller\_RouterSearchUtility\_V2\_04.zip*** if your PC has already installed .NET Framework 4.0 (this is the case for Windows 7 operating system).

### Note:

At run time this tool needs the free software libraries **Microsoft .NET Framework 4.0** and **WinPcap 4.1.2 or higher**. WinPcap is an industry-standard tool for link-layer network access in Windows environments which also will be used as a basic library for Wireshark.

You have the possibility to download either a ZIP-file with included library Microsoft .NET Framework 4.0 or without if your PC already has installed Framework 4.0. The Microsoft .NET Framework will be installed automatically during the setup process if not already installed on your PC.

The **Microsoft .NET Framework 4.0 Client library** alternatively can be downloaded from the Microsoft web page <http://www.microsoft.com/net/download>.

**The WinPcap library (added to zip-file) must be installed separately (see installation note below).**

Please check and if there exists a newer version of the **WinPcap** library than version 4.1.2. You can download from the web page <http://www.winpcap.org/>

WinPcap Copyright (c) 1999 - 2005 NetGroup, Politecnico di Torino (Italy).

WinPcap Copyright (c) 2005 - 2010 CACE Technologies, Davis (California).

All rights reserved.

*THIS SOFTWARE IS PROVIDED BY THE COPYRIGHT HOLDERS AND CONTRIBUTORS "AS IS" AND ANY EXPRESS OR IMPLIED WARRANTIES, INCLUDING, BUT NOT LIMITED TO, THE IMPLIED WARRANTIES OF MERCHANTABILITY AND FITNESS FOR A PARTICULAR PURPOSE ARE DISCLAIMED. IN NO EVENT SHALL THE COPYRIGHT OWNER OR CONTRIBUTORS BE LIABLE FOR ANY DIRECT, INDIRECT, INCIDENTAL, SPECIAL, EXEMPLARY, OR CONSEQUENTIAL DAMAGES (INCLUDING, BUT NOT LIMITED TO, PROCUREMENT OF SUBSTITUTE GOODS OR SERVICES; LOSS OF USE, DATA, OR PROFITS; OR BUSINESS INTERRUPTION) HOWEVER CAUSED AND ON ANY THEORY OF LIABILITY, WHETHER IN CONTRACT, STRICT LIABILITY, OR TORT (INCLUDING NEGLIGENCE OR OTHERWISE) ARISING IN ANY WAY OUT OF THE USE OF THIS SOFTWARE, EVEN IF ADVISED OF THE POSSIBILITY OF SUCH DAMAGE.*

*This product includes software developed by the University of California, Lawrence Berkeley Laboratory and its contributors.*

*This product includes software developed by the Kungliga Tekniska Högskolan and its contributors.*

*This product includes software developed by Yen Yen Lim and North Dakota State University.*

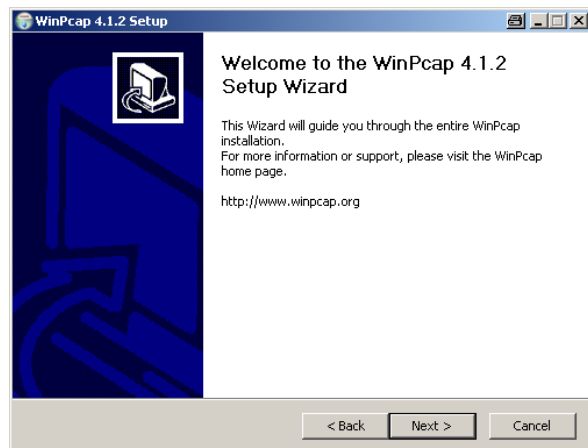
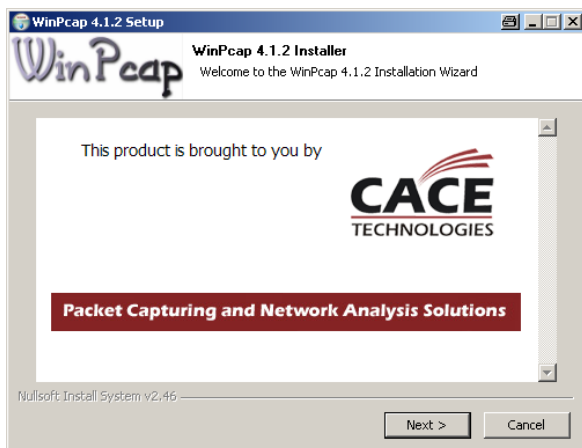
**Important Note:**

If you have installed the preliminary version of Weidmüller Router-Search-Utility named **WMRSU** please uninstall this software manually before installing new version 2.04.



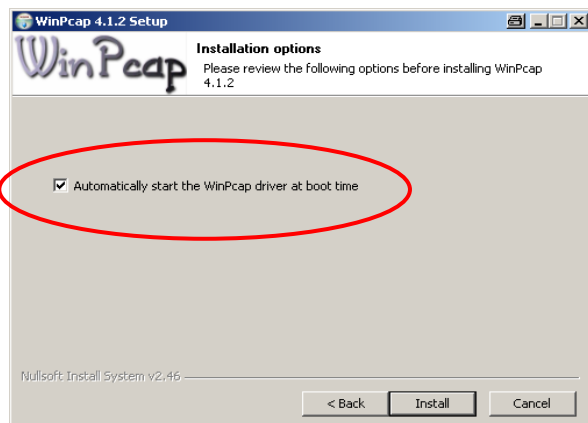
**Installation of Router-Search-Utility V 2.04**

1. Unzip the file Weidmueller\_RouterSearchUtility\_V2.04.zip.
2. **First** install the WinPcap library.
  - ▶ Start the program WinPcap\_4\_1\_2.exe (or newer version) and follow the installation instructions. You do not need to change any configuration parameter.



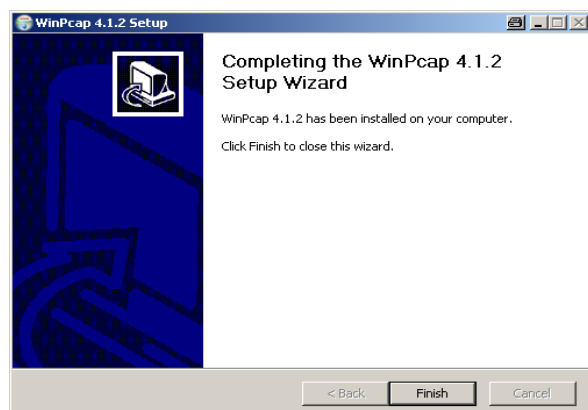
**Note:**

Please **do not clear the checkbox** otherwise the WinPcap driver will not be activated after installation.



3. Installation of WinPcap is completed.

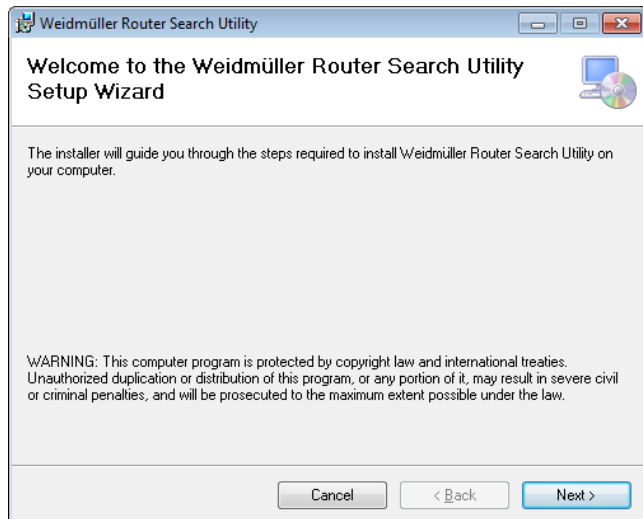
- ▶ Click on button Finish to finish the installation process.



#### 4. Installation of Weidmüller Router-Search-Utility.

If you have download the zip-file **including** Microsoft .NET Framework 4.0 then run 'Setup.exe'.

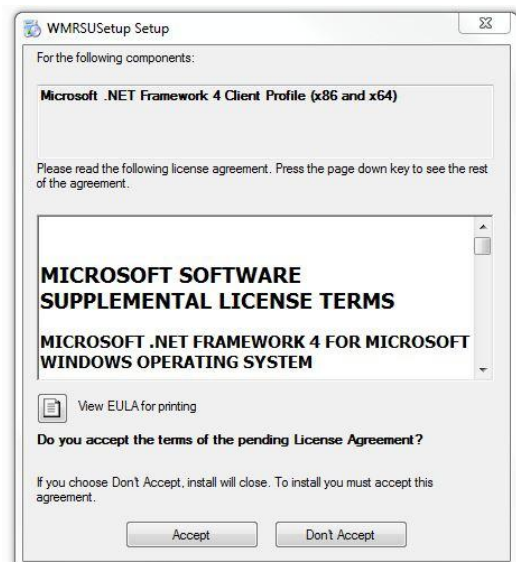
If you have download the zip-file **without** Microsoft .NET Framework 4.0 then run 'Setup.WMRouterSearchUtility.msi'.



#### Note:

If you don't have installed the library Microsoft .NET Framework 4.0 then a window similar to this screenshot will be displayed.

► Click on button **Accept** to install the library.

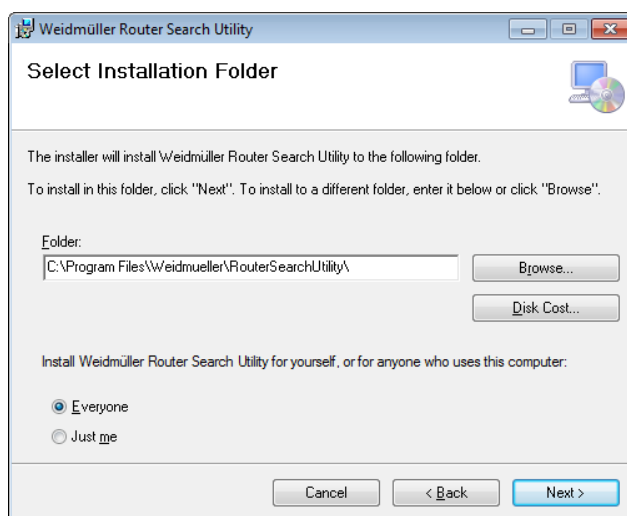


#### 5. Continue the installation.

► Click on button **Next** if you would like to proceed with the default parameters.

#### Note:

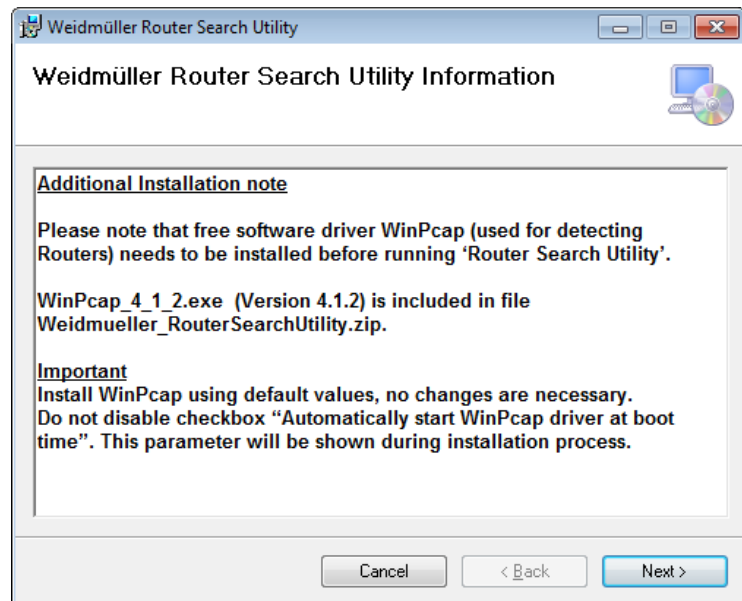
The software will be installed in the directory **Weidmueller\RouterSearchUtility** below the standard Microsoft Windows program folder.



**Note: If you are requested by Windows 7 to allow the installation please accept.**

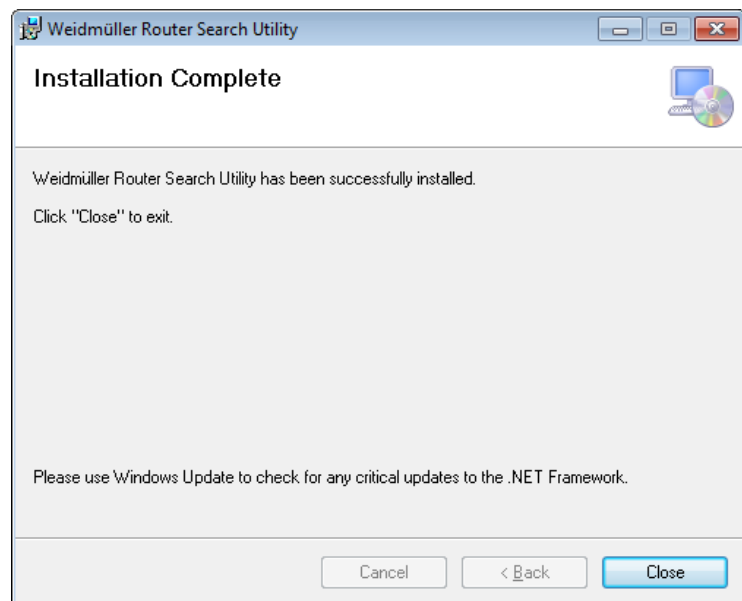
Then a message will be displayed to remember that you need to install **WinPcap** before running the software.

► Click on button **Next**

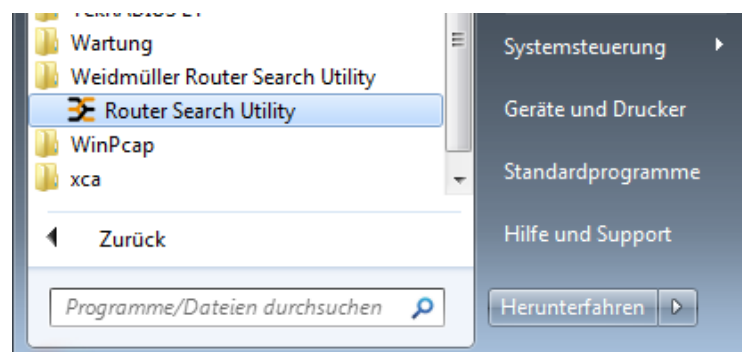


6. Installation is completed.

► Click on button **Close** to finish the installation process.

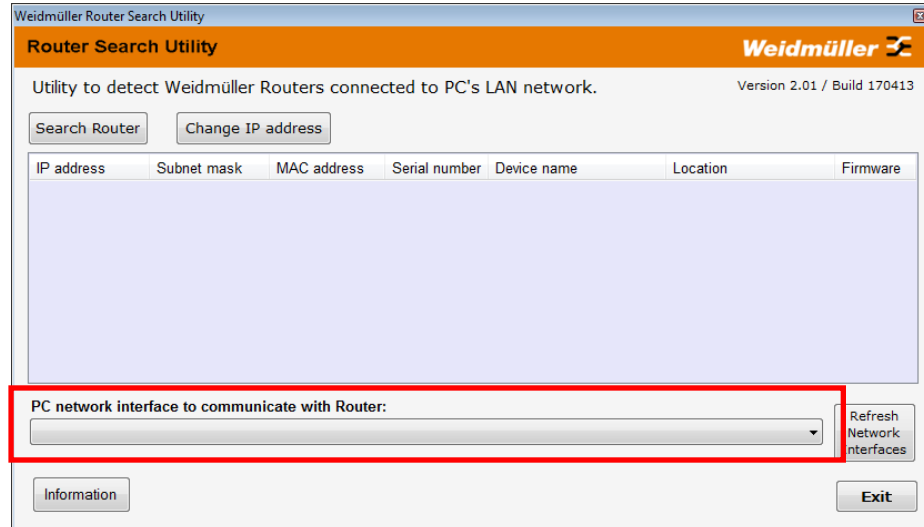


7. Now start the utility using the link  
Start → Programs  
→ Weidmüller Router Search Utility  
→ Router Search Utility



8. Start window of Router Search Utility

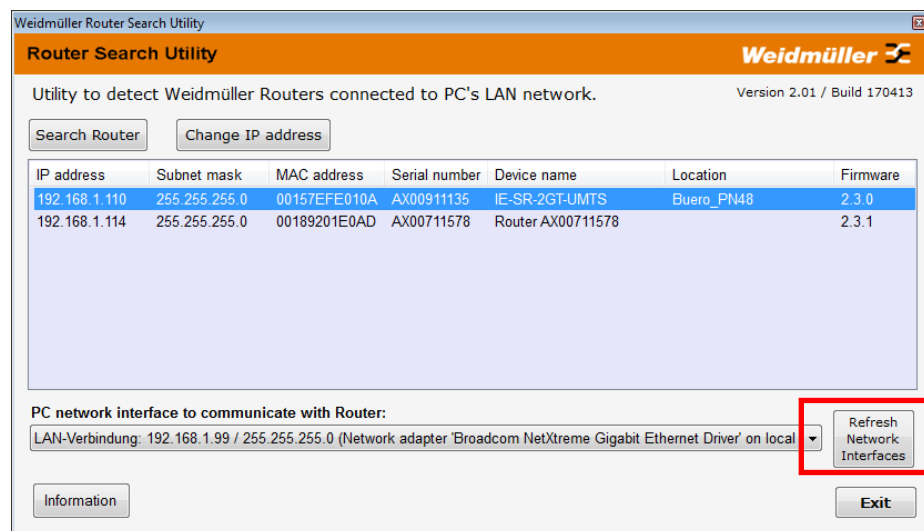
- First select PC's network interface where to search for Routers.



9. Click button 'Search Router' to detect devices connected to selected PC's network interface. Screenshot shows 2 found routers.

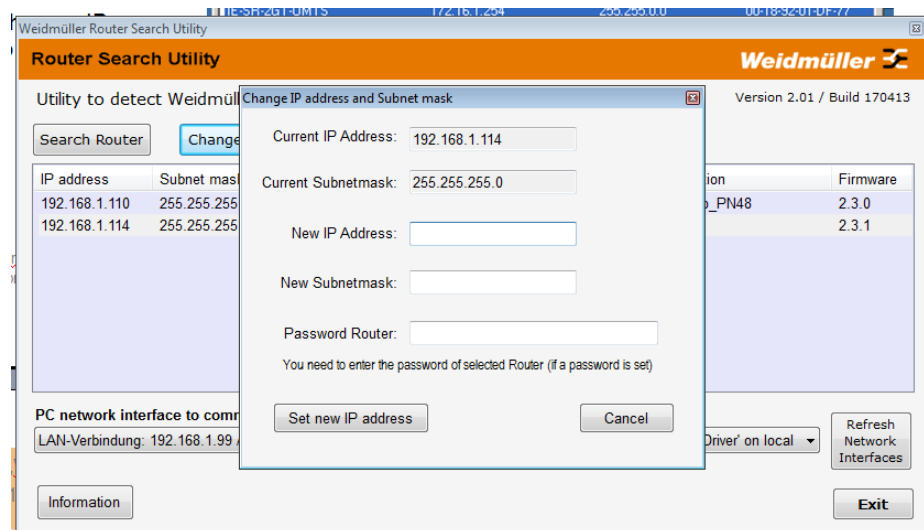
**Note:**

The button 'Refresh network interfaces' can be used if you change the IP address of the selected PC network interface and this program is still running. Click this button and the shown data will be updated to the new IP settings.



10. To change the IP address of a detected router first select the entry to be changed and then click on button **Change IP**.

Now an additional window will be opened to set the new IP configuration to the connected router port. You need to enter the Router access password.



**Note:**

**The web interface of a found Router directly can be opened by double-click a displayed device in the list view.**

To get access to the web interface of Router the IP address range and Subnet mask of the Configuration-PC must be the same as the Router.