

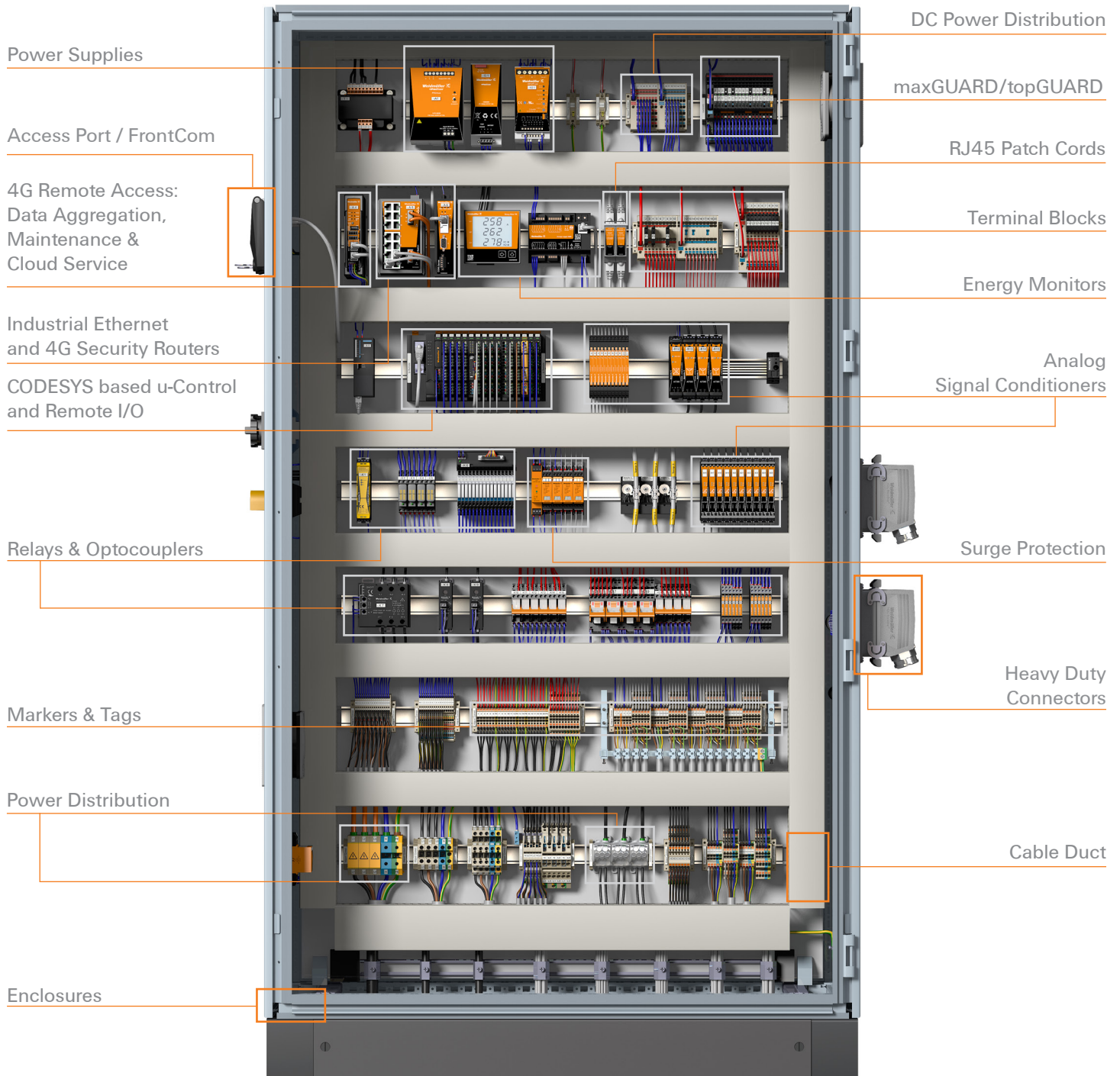
Smart Industrial Connectivity

Product Portfolio



Weidmüller 

Our Solutions for Smart Industrial Connectivity

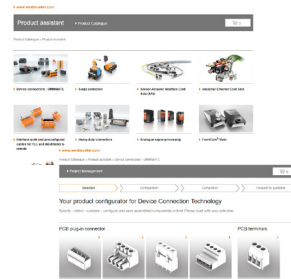


Configuration Software



Weidmuller Configurator

- Simplifies configuration and ordering for extra efficiency in panel planning, installation and operation
- Minimization of failures
- User-friendly interface and documentation



Product Configuration/ Selection Software

- Competitive cross-reference database
- Configure:
 - Custom PCBs
 - Rectangular connectors
 - Ethernet cabling & connectors
 - SAI cordsets & connectors

Weidmuller Services & Promotions

Weidmuller Configurator

As a software solution, the Weidmuller Configurator not only offers support for individual steps, but for panel building as an entire, seamless process, building a bridge from planning through to operation.

- Compatible with E-Cad Programs
- Fast Delivery Service — quote in minutes — 10 day delivery on assembled DIN Rails
- Minimization of failures
- User-friendly and easy documentation
- Greater flexibility in your project planning

More information: www.weidmuller.com/wmc



Engineering & Visualization Tools

The easy way to your IIOT-ready HMI

u-create studio

- Fully-fledged engineering tool, developed using the proven CODESYS system
- CODESYS-based development environment in accordance with IEC 61131-3
- C/C++ environment for flexible, object-oriented programming of applications
- Open Linux structure simplifies installation of individual software modules, configuration, diagnostics and simulation
- OPC UA server for M2M communication, EtherCAT & CANopen fieldbus master/slave, and Modbus TCP (Client/Server)
- Compatible with u-control 2000 studio and u-remote hardware



u-create web

- u-create web allows for flexible engineering in a web-based programming environment
- Uses standardized web technologies such as HTML5, CSS, and JavaScript
- Platform and device-neutral programming, configuration and system parametrization in accordance with IEC 61131-3
- Compatible with the u-control 2000 web and u-remote hardware
- IoT module Node-RED, u-link, OPC UA server and smart visu preinstalled
- Can be extended with additional software modules, for example: OPC UA Client, MQTT and other cloud services (via Node-RED)



u-create PROCON-WEB (Embedded & SCADA versions)

- Minimal hardware requirements for easy deployment to third party applications based on Linux or container technology
- PROCON-WEB Embedded Systems can be implemented independently of hardware and operating system.
- Web-based visualization, support for mobile devices, and open communication standards increase flexibility.
- PROCON-WEB SCADA simplifies the project planning of modern multi-touch-capable user interfaces for automation. The integrated web server enables the use of all HTML5-capable browsers without special plug-ins. The comprehensive portfolio of communication drivers facilitates connection with all common control systems.
- Predefined control elements, user and rights management, multilingual, data recording, recipe management, alarm and message processing, and many other features offered.
- Features such as the class-instance concept and automation objects with structure support speed up project planning. Scripting and customizable control elements increase flexibility for special requirements.



u-view

- Touch panels with excellent image quality and high-performance processors that are ideal for industrial applications
- u-view high-performance IPCs and Panel PCs enable the flexible control, operation and monitoring of machines and systems. They are highly reliable and designed for state-of-the-art visualization, control, and IoT applications.

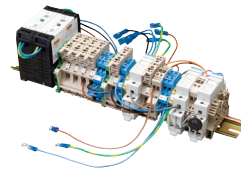


More information: www.weidmuller.com/u-mation

Engineered Solutions

Rail Assemblies

- DIN-rail assemblies
- Customized marking options
- Wired and tested assemblies
- Product kitting and bundling



Engineered Enclosures

- ATEX; IECEX; CULus; Class 1 Div 2, Zone 1, Zone 2
- Wireless assemblies
- Custom junction boxes
- Design, assembly and wired solutions
- Application Specific Solutions
EX: DCS, I/O Marshalling Cabinets
Combiner boxes for PV systems



Custom cable assemblies

- Consisting of either standardized or specific connecting lines - we provide you with the optimal solution for every cabling task
- Various individualization levels to meet your needs in every planning situation
- Demand-oriented cable lengths, plugs, markings, or colors from a batch size of one
- Compatible for use in robots and with recyclable, halogen-free cables
- Create your own variations with the aid of our online configurator



More information: www.weidmuller.com/assemblyservices

OMNIMATE® Services

- Develop your devices with unique efficiency. Our OMNIMATE® Services considerably reduce your project costs and time-to-market.
- Support all project stages: specifications preparation, development and design, approval, and series production. Whether you need to obtain know-how or to find the right components for your device, you can rely on our expertise.



AppGuide

- Based on your application, the AppGuide will show you a representative range of products for the different functions of your device. Select the application and product group, then order and receive the product.



72-hour sample service

- Order your design-in samples, quickly and easily in our online product catalog. Use the free 72-hour sample service for OMNIMATE®. We deliver your samples to the desired location within 72 hours.



More information: www.weidmuller.com/omnimate-services

HDC Speedline® 48hr Quick Ship

Speedline® Service

- Guarantees the availability of our most popular Heavy Duty Connector (HDC) products, such as Weidmuller's RockStar® Housings, Inserts and Cable Glands, so OEMs can make last-minute connections fast!



More information: www.weidmuller.com/speedline

Service and Support

More information: www.weidmuller.com/service



Industrial Connectivity Portfolio

Power

Power Feed-In & Distribution

- UL 508A SCCR approved
- IEC finger safe
- Single and 3-phase configuration options
- Aluminum and copper conductor acceptance
- TS35 DIN-rail or direct mountable



Application-Specific Terminal Blocks

AC Power Monitoring

- For voltage distribution or load monitoring
- Single or 3-phase voltages
- Direct AC current up to 5 Amp
- Isolated analog or relay outputs
- cULus approval

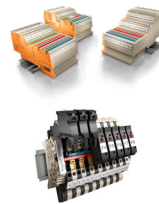


Energy Monitoring

Signal

Signal Wiring & Marshalling

- Multiple signal configurations
- Extremely compact
- Fast wiring thanks to PUSH IN technology
- Color-coded pushers ensure safe wiring
- Other termination technologies available



Application-Specific Terminal Blocks

Multi-functional Terminals & Fuse Blocks

- SNAP IN, PUSH IN, Screw and Tension clamp technology
- Fuse, feedthrough, ground, disconnect, electric components, pluggable terminals & more



Fuse Blocks

- 5 x 20/25mm, 1 1/4" x 1/4", automotive, midjet fuse & more
- Blown fuse indication
- Low leakage current (<0.5 mA)



Modular Terminal Blocks

Data

Industrial Ethernet Connectors and Cables

- Cat 6a connectors and cables for all industrial ethernet applications
- PROFINET, SERCOS III, Ethernet IP...
- RJ45, M12 D and X Coded
- LC, SC, SCRJ and ST fiber optic connectors
- Shielded and unshielded assembled cables
- Wide assortment of cut to length bulk cable



Industrial Ethernet

Industrial Ethernet Switches

- Managed and unmanaged switches
- Gigabit Ethernet and POE
- Support copper (RJ45) and SFP modules
- Fiber optic (SC, ST, LC)
- With relay status contacts
- Metal and plastic housings



Industrial Ethernet

Field

RockStar® Heavy Duty Connectors

- Reliable power, signal and data transmission
- NEMA 4/4x and IP65 protection
- Complete range of connector inserts and housings
- SNAP IN, PUSH IN, screw, tension clamp and crimp terminations



RockStar® Heavy Duty Connectors

Klippon® Protect Enclosure System & Cable Glands

- ATEX; IECEx, cULus, Class 1 Div2, Zone 1, Zone 2, 21, 22
- IP66 ingress protection (NEMA 4/4X)
- High-temp gaskets -50°C to +135°C
- 1 to 4 gland plate configurations
- 316 & 304 stainless steel; fiberglass reinforced polyester; die cast aluminum and polyester families



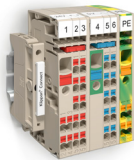
Enclosures and Cable Glands

For hazardous locations, we offer solutions that include the following agency approvals:



Control Voltage Distribution

- Grouped or alternating setup for maximum wiring density
- Potential distribution with fuse protection
- Colored pushers prevent incorrect wiring
- Two cross-connection channels



Application-Specific Terminal Blocks

PLC/DCS System Cabling & Migration Solutions

- Field Wiring termination and control system marshalling for DCS or PLC's
- Universal conversion/migration platform for updating legacy DCS/PLC to new systems
- Standard and customized pre-assembled cables and Field Termination Assemblies
- Integrated components (fuses, disconnect)
- Compact, space and time-saving



Interface Units & PLC Solutions

Security Router & Remote Access Maintenance & Cloud Service

- IIoT applications
- Enhanced security for easy plant or machine access
- Customized system management
- Status monitoring and reporting
- Secure remote maintenance and remote diagnostics
- Support cellular & WiFi
- Support NAT, VPN and Firewall



Remote Maintenance

Power Supplies

- Ranges from 0.7A to 40A
- AC and DC input voltages
- Single and 3-phase versions
- Redundancy options
- UPS control units / battery backup units
- DC-to-DC converters
- PRO COM pluggable communication modules



Power Supplies

Mechanical & Solid-State Relays

- From 6.1mm width
- 1, 2, 4 Pole CO
- Finger-safe connections
- Long life
- Inductive loads
- High frequencies
- Hazardous approval (C1Div2)
- Individual or assembled Kits available
- Optional accessories available



Relays and Optocouplers

Remote I/O IP67 (SAI)

- Active & passive interfaces
- Analog/Digital I/O
- M5, M8, M12 & M23 connections
- Feed through; Profibus; EIP, ProfiNet, EtherCat, I/O-Link
- Metal and plastic interfaces and distributors



Remote I/O

Circuit Protection

- Branch & Supplementary circuit protection
- Numerous trip curves
- Overcurrent protection
- Electronic protectors
- AC or DC or AC/DC (UC) protection
- Thermal and hydraulic solutions
- UL489 or UL1077 w/ complete accessories



Circuit and Surge Protection

Analog Signal Conditioning & Isolation

- 2, 3 and 4 wire models
- 2-channel models and splitters
- Ex isolating barriers (IS)
- HART transparent options
- Configurable input/output
- From 6mm wide per unit
- Intrinsically safe signal conditioners



Analog Signal Conditioning

Wireless I/O and Modem

- 5.8GHz
- 2.4GHz (WiFi)
- 900MHz FHSS
- Access Point/Client; Bridge/Router
- 2+ mile range (2.4GHz)
- 20+ mile range (900 FHSS)
- On board I/O
- Meshing and self-healing networks



Wireless I/O & Ethernet Connectivity

Decentralized Automation & Power Distribution – FieldPower®

- Modular IP67 enclosure system to integrate IP20 components in the field:
- Power distribution for conveyors and robots
- Potential distribution with maxGUARD
- Decentralize power supply with PROtop
- Remote I/O with u-remote



FieldPower® Power Bus System

Cabtite® Through-Wall Wire Cable Entry System

- Modular frames for multiple wire routing configurations
- Maintains IP66 (NEMA 4x & 12)
- Accepts round cable dia. from 0.12" - 1.34" and ASI cable
- Integrated strain relief acc. DIN EN 62444
- Accommodates 40 wires in 4.33" of space



Enclosures and Cable Glands

Sensor Actuator Connectors & Cordsets

- M5, M8, M12, M23, 7/8" and valve plug connectors and cordsets
- Wide range of cable types and configurations
- Weld slag resistant and high flex (>20 million cycles) versions
- Shielded and unshielded
- Plug, panel feed through and board mounted connectors



Sensor Actuator Interface



Over Voltage Protection

- Fully supports North American standards UL 1449 4th Edition
- All power network grid types and voltages single, two and three phase systems
- Heavy duty, reliable and pluggable arrestor with locking mechanism
- Optional remote signaling contact
- Special mounting clip for fast DIN-rail mounting
- Centralized and wide control window



Surge Protection

AC Receptacles

- Simplex and duplex
- GFCI
- UL508 approvals
- Assembly-free
- DIN-rail or panel mountable



Industrial Connectivity

OMNIMATE® Power

- PCB connections for maximum performance and safety requirements
- Application-specific scalability of connections and unrestricted use up to 600V in accordance with UL standards



PCB Terminals and Connectors

maxGUARD / topGUARD

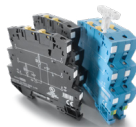
- Load monitoring and DC voltage distribution combined
- Class 2 approved
- Modular system
- Remote reset of loads
- Disconnect and easy cross connect options
- Intelligent electronic load monitoring



Electronic Load Monitoring

Surge Protection

- For analog, status and network signals
- Discharges up to 20kA (8/20µs)
- Pluggable, replaceable SPD versions
- Local and remote status indication
- SPD element testing option
- Single, multi-stage and floating signal protection
- Integrated ground contact in base element



Surge Protection

OMNIMATE® Signal

- User-friendly connection technologies from clamping yoke screw connection to PUSH IN spring connection
- Innovative, award-winning SNAP IN connection



PCB Terminals and Connectors

Wireless I/O

- 900MHz FHSS
- 20+ mile range
- Full 1W of broadcast power
- Transceiver and unidirectional units



Wireless I/O and Ethernet Connectivity

Lightning & Surge Protection

- RS422
- RS232
- Coax data networks
- Ethernet (Cat 5 & 6)
- POE



Surge Protection

OMNIMATE® Data

- Data connectors and sockets with future-proof transmission properties
- Innovative connection system for industry-compatible design and high quality individual components for increasing data rates



RJ45, USB & D-Sub Connectors

u-mation Automation Solutions

Control systems | u-control

- Automation with the compact u-control and innovative engineering
- Modular design
 - Powered by u-OS to be open and flexible
 - With APPs like CODESYS, Node-RED and Portainer



I/O systems | u-remote

- Automation with the flexible and innovative I/O system u-remote
- Modular & space-saving
 - More than 10 fieldbus protocols
 - Over 80 I/O-modules
 - Integrated web server & diagnostic functions



Visualization systems | u-view

- Easy machine visualization with u-view touch panels, IPCs and the visualization software u-create PROCON-WEB
- Touch panels & industrial PCs
 - u-create PROCON-WEB
 - HTML5-based visualization
 - HMI up to SCADA applications

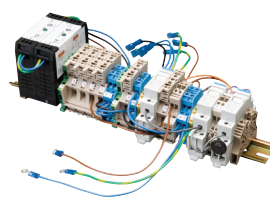


Automation

Assembly Services — Engineered Solutions

Rail Assemblies

- DIN-rail assemblies
- Customized marking options
- Wired and tested assemblies
- Product kitting and bundling



Engineered & Populated Enclosures

- ATEX; IECEx; CULus; Class1 Div2, Zone1, Zone2, 21, 22
- Wireless assemblies
- Custom junction boxes
- Design, assembly & wired offering
- Applications: Ex: DCS, I/O, marshalling cabinets, PV combiner boxes
- HazLoc umbrella assembly certification & global country certifications



Engineered Solutions

Tools

Cutting

Cut copper and aluminum cables and wire up to 1260 kcmil

KT 8

- Cuts wire up to 6 AWG
- Blade shape prevents wire distortion

KT 45R

- One-hand operation
- Suitable for non-pinch cutting of copper and aluminium conductors



Stripping

Quick and accurate stripping with no damage to single conductors

Stripax® Ultimate

- Strip hard, halogen-free cable insulation with ease from AWG 26... 10

AM 25 and AM 35

- Strips PVC insulated cables, 0.18" ... 1.0" diameter
- Lengthwise or spiral cuts



Screwdrivers

- Hardened high-alloy steel tips
- Soft-finish grip handles for comfortable handling
- Insulated for 1,000V safety rating
- Manual torque screwdriver



Crimping

Precise crimp with minimal force

Stripax® Family – 3-in-1 Tool

- Cuts, strips and crimps linked wire ferrules from 20...14 AWG
- For PVC insulated wire

PZ 6 Roto L

- Crimps wire-end ferrules from 24...10 AWG
- Wire insertion from side or front



Automatic Machines

Our automatic machines optimize installation time and streamlines the manufacturing process

- Cutting Machines
- Stripping Machines
- Crimping Machines
- Stripping and Crimping Machines



Ferrules — insulated and non-insulated & Cable Lugs

Wire end ferrules ensure a secure and reliable connection

- 3 color codes available
- Loose, strips, reels and assortments from 24 AWG – 300 MCM
- UL Listed approval when installed with Weidmuller tools



Tools

Tools

Marking Systems

Printing Systems

Thermal MultiMark

- MultiMark is the smart all-in-one solution for the entire cabinet
- Quick and easy thermal printing

PrintJet Connect

- Weidmuller's industry-leading marking system
- Built in card stacker (50 cards)
- Print on plastic or metal cards



Marker Format Types

Terminal Markers

- Terminal blank identifiers for Weidmuller terminals and other manufacturers' terminals

Wire and Cable Markers

- Heat Shrink
- Self-adhesive Wrap Around
- Stainless steel

Device Markers

- Placard and electrical
- Actuator and contactor
- E-stop and push button
- Relays and circuit breakers



Marking Systems

Weidmuller – Your Partner in Smart Industrial Connectivity

Be it automotive manufacturing, electricity generation or water management – there's hardly any industry that can do without electronics and electrical connectivity today. As experienced experts we support our customers and partners around the world with products, solutions and services in the industrial environment of power, signal, data and controls. We are continuously developing innovative, sustainable and useful products and solutions for our customer's individual needs. We are a true partner with extensive knowledge and understanding of its customer and their application. Together we set standards in Industrial Connectivity.

Weidmuller, Inc

821 Southlake Blvd.
Richmond, Virginia 23236
Telephone: (800) 849-9343
Email: customerservice@weidmuller.com
Website: www.weidmuller.com

