

Instructions for Firmware update

This document describes firmware and filesystem (webpages) update of VPU IoT devices. To update the device, user should carefully follow steps described below:

1. Power the device

Connect N, L1, L2 and L3 wires and power the device with 230V.

It is also possible to power the device with only N and one L wire.

Please ensure during the update process a stable power supply.

2. Enable access point (Wifi hotspot)

If device was previously not configured to connect to Wifi infrastructure, then Wifi access point is automatically enabled after power-on and user can skip to next step.

If Wifi is not automatically enabled after power-on and device was previously configured to connect to Wifi infrastructure, user needs to put it into Maintenance mode (enabling Wifi access point) by pressing the button 5 times. Presses should be about 0.5s to 1.0s long. Blinking of green LED indicates that Wifi is turned on.



3. Connect to access point (Wifi hotspot)


Wifi access point is shown on device (PC, tablet, mobile). Connect to it.
Default password is **Detmold01**



4. Navigate to update page

Open a browser and navigate to: <http://172.22.87.77/upload.html>

If administrator password has not been configured yet, user needs to set it first.
Type the same password twice:


[Dashboard](#)
[Configuration](#)
[About](#)


Update device

Password must be set upon first access

New Password


New Password (retype)

SAVE



Weidmüller • Klingenbergstraße 26 • 32758 Detmold • phone +49 5231 14-0 • fax +49 5231 14-292083

If password has already been configured, user needs to log in with credentials.
Username is **admin**


[Dashboard](#)
[Configuration](#)
[About](#)


Update device

Authorization required

Username

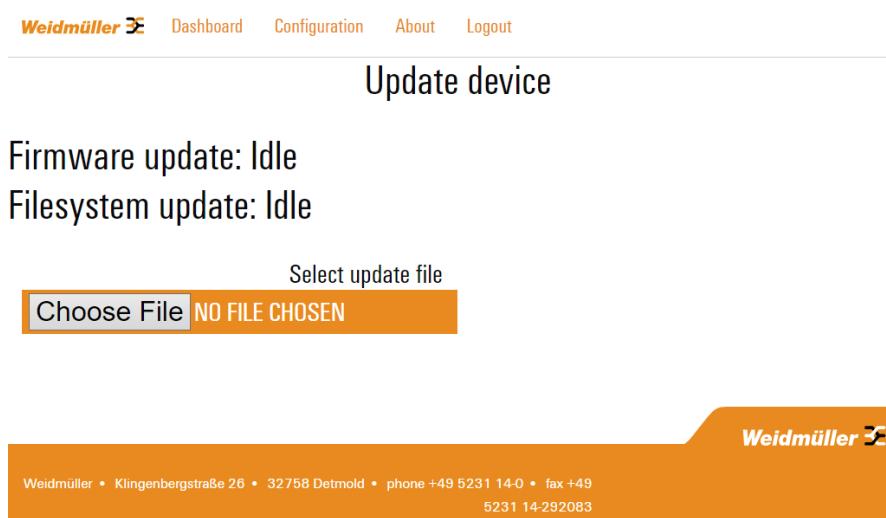
Password

LOG IN



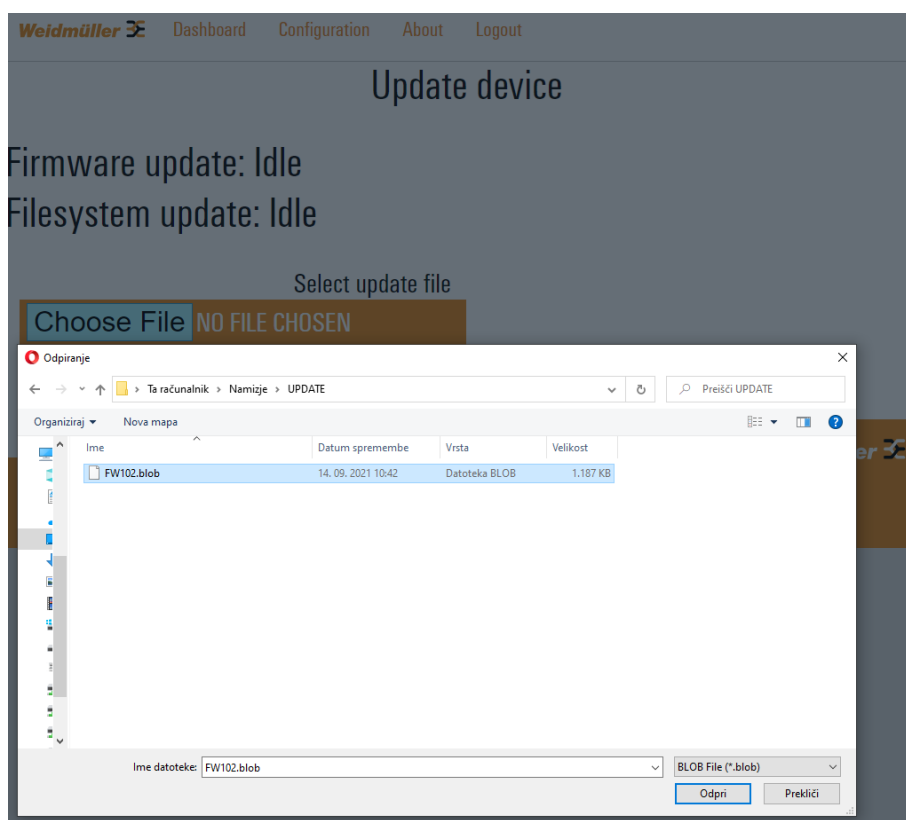
Weidmüller • Klingenbergstraße 26 • 32758 Detmold • phone +49 5231 14-0 • fax +49 5231 14-292083

This opens an *Update device* webpage:



5. Perform update

Click *Choose File* button. Navigate to update file (.blob extension) in your computer and select it.



Updating will start. File will be uploaded, decrypted and stored.
This takes a few minutes. Percentage indicates update procedure progress.

Update device



Firmware update: Idle

Filesystem update: Idle

Upload started. It can take few minutes, please wait...

When upload is finished both rows should show *Success* status.

Update device

Firmware update: Success

Filesystem update: Success