



A photograph of two men in a factory environment. The man on the left, wearing a light blue short-sleeved shirt and dark trousers, is holding a black rectangular device. The man on the right, wearing a grey suit jacket, white shirt, and glasses, is holding a smaller electronic component and connecting it to the device. The background shows industrial machinery with yellow safety railings and overhead lighting.

*“The stand-alone and compact residual current measurement box eliminates the need to shut down servers.”*  
*PRO-EL Thomas Pöttgen*

# Reference



01

## Customer & application

PRO-EL (DE): residual current measurement box for server rooms

02

## Requirements

Ready-to-connect box in increased protection class for residual current monitor with POE connection

03

## Weidmüller Solution (products & services)

FieldPower® enclosures, plug-in connectors, cables and engineering

04

## Customer benefits

Flexibly adaptable plug&play (retrofit) solution for uninterruptible server operation

# Customer & application

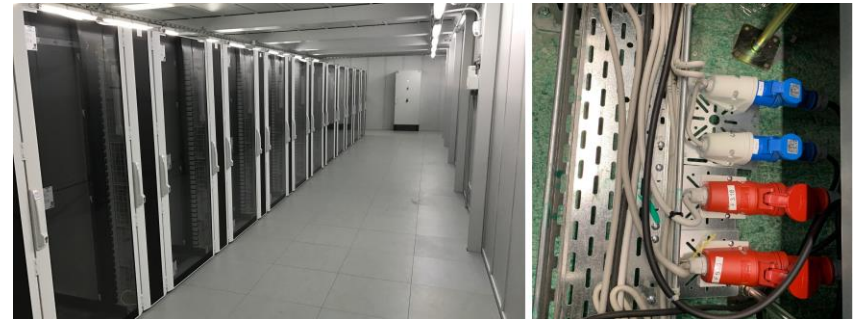


PRO-EL advises, plans and assumes electrotechnical responsibility.

<https://www.pro-el.de/beratung-und-planung/>



Shutting down servers for the necessary insulation resistance measurement is costly. PRO-EL wants to offer its customers a permanent differential current measurement in accordance with the new VDE 0105 0100, which is installed e.g. in the false floor of the server rooms and makes shutting down for the measurement unnecessary.



# Requirements



## Enclosure for residual current monitor

The Doepke residual current monitor must be encapsulated and provided with suitable interfaces. Different cable lengths and cross-sections should be possible.

The exact position of the plug-in points should still be easy to change at the installation site in order to be able to react flexibly to local conditions.

## Ready-to-connect solution

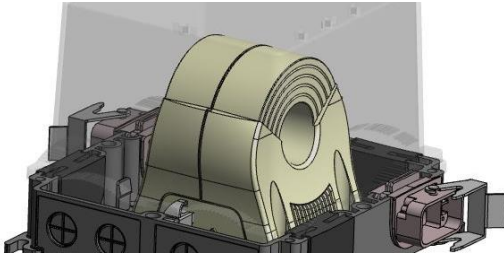
The box is to be connected to the control room via POE patch cable and monitor the current of the CEE connection line.

The ready-wired current measurement box is to be available unchanged from the PRO-EL warehouse. External cable lengths and cross-sections are to be adaptable to specific projects.

The internal wiring should be possible in 6mm<sup>2</sup>.

# Weidmüller Solution

## Consulting & service



- Ad hoc online meeting to clarify the requirements
- CAD-3D concept for the current measurement box
- Parts lists for box and cable sets

## Suitable housing



- FieldPower® enclosures provide space for the monitor and are compact enough for the false floor of server rooms
- The position of the plug-in points can be variably changed afterwards

## Matching plug-in connectors



- HQ connectors for easy adaptation to customer systems
- POE patch cable in different lengths with angled RJ45 connectors



# Customer benefits



- Reduced stock-keeping and fast availability: A standard box from the PRO-EL warehouse is identical for all applications.
- Suitable for different projects: Connectors allow easy adaptation of cable lengths and cross-sections as well as adaptation to customer interfaces.
- Adaptable at the installation site: The connector inserts can be flexibly positioned and changed afterwards.

# Interest awakened?

We are happy to answer your questions – in person, quickly and easily

[www.weidmueller.com/contact](http://www.weidmueller.com/contact)

Further information

[Landing page](#)

[Online catalog](#)





