

Heavy Duty Connectors

## Efficient motor control in low-voltage switchgear

Innovative distributor solution with PUSH IN



## A combination with distinctive benefits

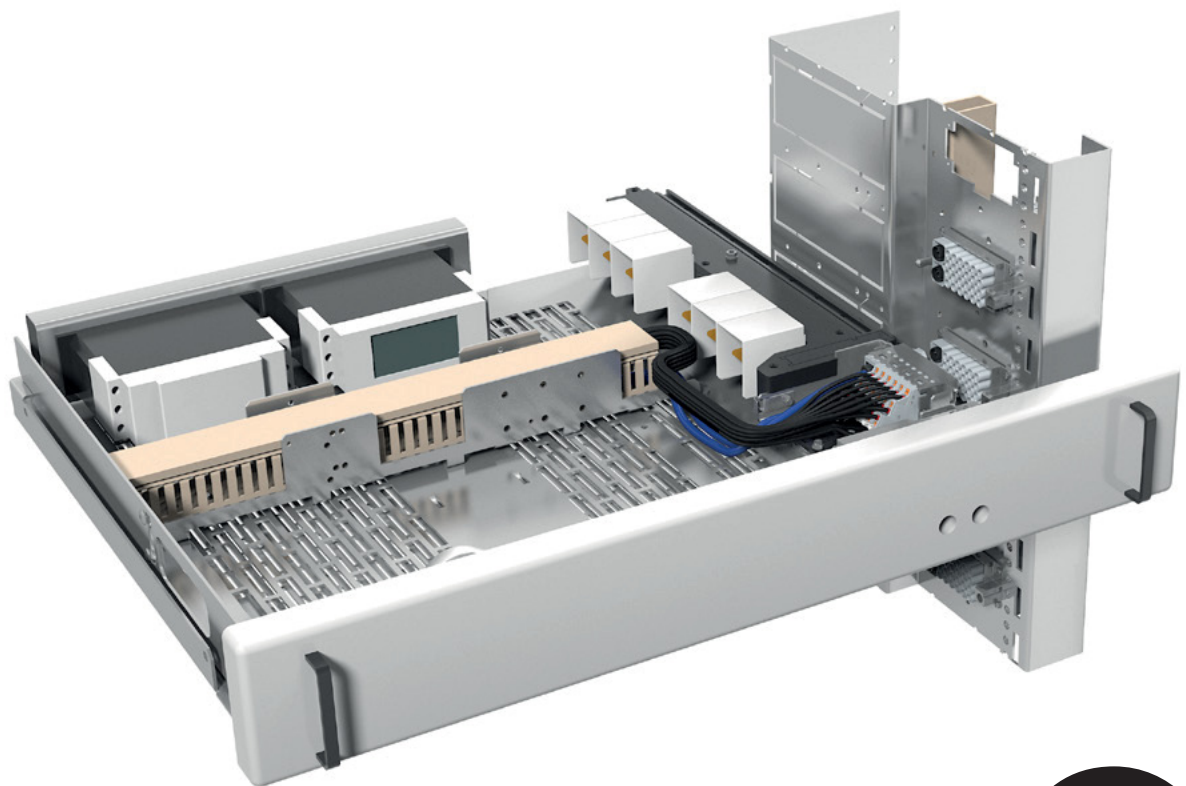
### RockStar® ModuPlug modules with PUSH IN connection

The increasing complexity and automation of industrial systems require distributor and control solutions that are more and more extensive. Installation space in the panel is valuable and must be used efficiently. Pioneering connection solutions are modular, combine energy, signals and data in one interface and accelerate the installation process.

#### Your benefits at a glance:

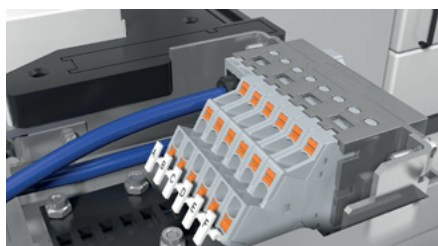
- Space-saving thanks to high density
- Modular structure for signal and data transmission
- Fast installation with PUSH IN connection
- Simple troubleshooting during operation

The new RockStar® ModuPlug modules with PUSH IN connection technology offer all these benefits. They also open up unexpected possibilities, in particular for distributor solutions in the otherwise unused panel interior. The impressive advantages of this innovative, pluggable solution are already being experienced in the IP20 environment of motor control in low-voltage switchgear.



# Pluggable connection solution for the panel inner wall

Space-saving, modular, easy



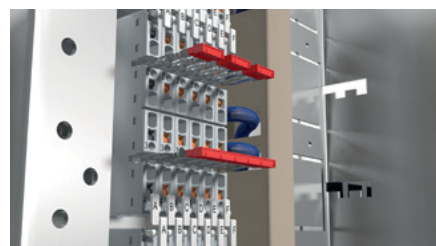
## Space-saving design

The multi-level structure enables high packing density and is extremely space-saving.



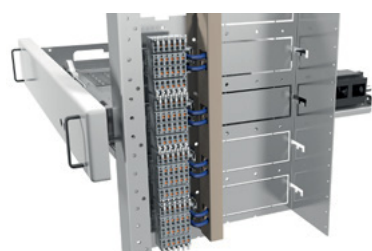
## Fast wiring

The PUSH IN connection enables direct and tool-free wiring of stripped conductors.



## Distribution of potentials

Simple potential distribution with connection channels for 2 to 12-pole cross-connectors.



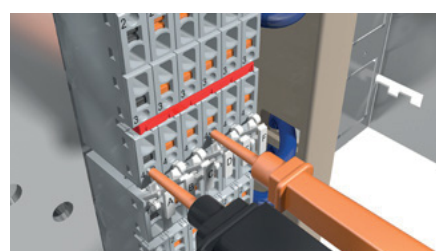
## Use of the installation space

Optimal use of the available installation space with the narrow design and 75 mm pitch.



## Optimal readability

The offset marker arrangement enables individual flexibility and readability from every position.



## Simple voltage test

The voltage test can be carried out conveniently at every contact point.

## RockStar® ModuPlug modules with

Rated voltage: 250 V (DIN EN 61984) / 600 V (UL/CSA)

Type	Size	No. of poles	Order No.
HDC MHE 4 FP	0.5	4	2635990000
HDC MHE 4 MP	0.5	4	2635980000
HDC MHE 4X FP	0.5	4	2636060000
HDC MHE 4X MP	0.5	4	2636070000
HDC MHE 4X2 FP	0.5	4	2636080000
HDC MHE 4X2 MP	0.5	4	2636090000
<b>Metallrahmen</b>			
HDC MF 16B AD	Baugröße 16B		1429010000
HDC MF 16B DA	Baugröße 16B		1429030000

## Technical Data

Clamping range:

Conductors without ferrules: 1 to 2.5 mm<sup>2</sup>

Conductors with ferrules: 0.5 to 2.5 mm<sup>2</sup>

Rated current: 16 A (DIN EN 61984)

Mating cycles: ≥ 500

Further variants and sizes can be found in our online catalogue at [www.weidmueller.com](http://www.weidmueller.com)

## **Weidmüller – Your partner in Industrial Connectivity**

As experienced experts we support our customers and partners around the world with products, solutions and services in the industrial environment of power, signal and data. We are at home in their industries and markets and know the technological challenges of tomorrow. We are therefore continuously developing innovative, sustainable and useful solutions for their individual needs. Together we set standards in Industrial Connectivity.

We cannot guarantee that there are no mistakes in the publications or software provided by us to the customer for the purpose of making orders. We try our best to quickly correct errors in our printed media.

All orders are based on our general terms of delivery, which can be reviewed on the websites of our group companies where you place your order. On demand we can also send the general terms of delivery to you.

Weidmüller Interface GmbH & Co. KG  
Klingenbergstraße 26  
32758 Detmold, Germany  
Telefon +49 5231 14-0  
Telefax +49 5231 14-292083  
[www.weidmueller.com](http://www.weidmueller.com)

Personal support can  
be found on our website:  
[www.weidmueller.com/contact](http://www.weidmueller.com/contact)

Made in Germany  
04/2020/SMM