

Relay modules and solid-state relays

Marking solutions

Klippon® Relay

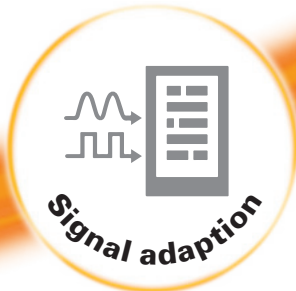
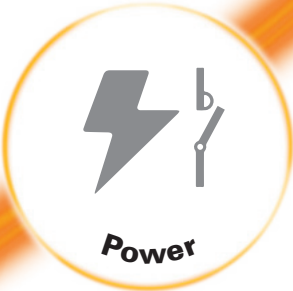
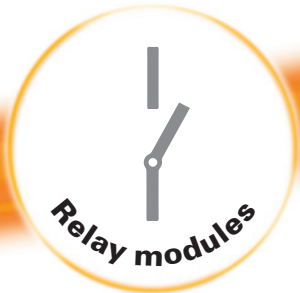


Solutions for more productivity

Highly flexible design processes – with Klippon® Relay

For more than 40 years, we have specialised in the optimisation of cabinet infrastructures. Our wide range of relay modules, solid-state relays and additional value-added services combine the highest standards with ultimate quality. Less wiring effort, housing optimisation through space saving, optimal marking and cost reductions – our customers challenges are our motivation. Our assortment impresses through reliability, longevity and safety. Supplemented by our digital data support, switching load consulting and online selection guides, we support our customers throughout the entire work process – from the planning phase to installation and operation.

In our universal range, you will find an extensive portfolio of relay modules and solid-state relays in various designs.



You will find a tailor-made portfolio of products in our application range to increase your productivity and safety for various fields of application.



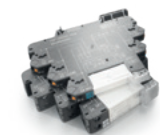
Visit our website for more information
www.weidmueller.com/klipponrelay


Let's connect.

Reliable switching of industrial loads and safe separation and multiplication of signals

With our high-performance relay modules and solid-state relays

Relay modules
For switching and amplifying digital signals in automation technology and for galvanic isolation.

 **TERMSERIES**
The all-rounder. Modular relay modules from 6 mm width with extensive accessories, large selection of variants and unlimited cross-connection possibilities.


 **RIDERSERIES**
High-quality universal relays with many sophisticated details and international approvals in different designs for industrial applications.

 **D-SERIES**
The industrial relay modules with innovative features, an extensive range of variants and a wide assortment of designs for a variety of applications.

 **Timing functions**
Timing relays are used in automation technology to compensate for errors due to short cycle times.


 **Functional safety**
Power-solid-state contactor up to 75 A and miniature contactors up to 30 A.


Solid-state relays
For wear-free switching and amplification of digital signals in automation engineering.

 **TERMSERIES**
The all-rounder. Modular relay modules from 6 mm width with extensive accessories, large selection of variants and unlimited cross-connection possibilities.

 **TERMOPTO**
TERMOPTO offers wear- and maintenance-free electrical isolation in a compact terminal block design with PUSH IN connection technology.

 **MICROOPTO**
The MICROOPTO family offers high-quality solid-state relays for application-oriented problem solutions. International approvals enable worldwide use.

 **PSSR**
The power solid-state relays switch high AC loads up to 75 A wear-free, reliable and noiseless. They also have high shock and vibration resistance for protection in the process industry.

 **All Markers**
which are listed in this brochure, you will find directly on the article in the online catalogue under the item „Accessories“.

Systemised marking

For optimised processes

Our co-ordinated complete system

Professional, industrial marking in line with the IEC 60204-1 standard is essential for faultless operation and reliable maintenance of industrial facilities. Weidmüller calls this “systemised marking” and offers more than the norm: a perfectly co-ordinated product range for optimised processes.



Software
Intuitive to use and tailored to your requirements. Import, edit and manage data with ease with the M-Print® PRO software.



Markers
Constructive solutions for all cabinet-related applications. From the shrink sleeve to the metal marker.

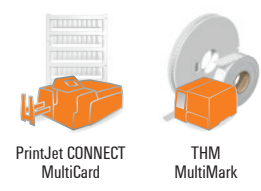
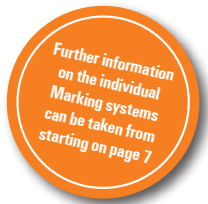


Printers
Laser, ink or thermal transfer. Industrial printing systems for every requirement. Designed with one eye on the future to suit your requirement profile.



Let's connect. Visit our katalog for more information – Markers, printers & software

Picking the right
Selection guide



	Type	WS	WS MM	WAD	ESG	ESG MM	THM	SM	SM MM
TERMSERIES	6.4 mm Complete module /empty socket	10/6	12/6	-	-	-	-	-	-
	12.8 mm Complete module /empty socket	10/6 10/12	12/6 12/8	-	-	-	-	-	-
	Partitions plates*	10/6	12/6	5	-	-	-	-	-
	Interface Adapter	10/6 12/6	12/6	-	-	-	-	-	-
RIDERSERIES	RCI relay	-	-	-	6/15 K	6/15	15/6	-	-
	RCI socket	-	-	-	6/15 SRC-I	-	-	-	-
	RCI retaining clip	-	-	-	6/15 K	6/15	15/6	-	-
	RCI KITs	-	-	-	6/15 SRC-I 6/15 K	6/15	15/6	-	-
	RCM relay	-	-	-	6/15 K	6/15	15/6	-	-
	RCM socket	-	-	-	9/26 SCM-I	-	-	-	-
	RCM retaining clip	-	-	-	6/15 K 6/17 K	6/15 6/17	15/6	-	-
	RCM KITs	-	-	-	9/26 SCM-I 6/15 K 6/17 K	6/15 6/17	15/6	-	-
D-SERIES	DRI relay	-	-	-	6/15 K	6/15	-15/6	-	-
	DRI socket /retaining clip	-	-	-	6/15 SDI	-	-	-	-
	DRI KITs	-	-	-	6/15 SDI 6/15 K	6/15	15/6	-	-
	DRM relay	-	-	-	6/15 K 6/17 K	6/15 6/17	15/6	-	-
	DRM socket /retaining clip	-	-	-	9/26 SCM ECO	-	-	-	-
	DRM KITs	-	-	-	9/26 SCM ECO 6/15 K 6/17 K	6/15 6/17	15/6	-	-
	DRL 1/2 CO	-	-	-	6/15 K 6/17 K	6/15 6/17	15/6	-	-
	DRL 3 CO	-	-	-	6/15 K 6/17 K 9/11 K	6/15 6/17	15/6	-	-
	DRL 4 CO / DRW/DRH/DRR	-	-	-	6/15 K 6/17 K 9/11 K	6/15 6/17	15/6	18/9.5 K	18/9.5
	MCZ-SERIES	10/6	12/6	-	-	-	-	-	-
	MICROOPTO	10/6 12/6	12/6	-	-	-	-	-	-
	TERMOPTO	10/6 12/6	12/6	-	-	-	-	-	-
TIMING FUNCTIONS	TFI-SERIES	-	-	-	6/15 K 6/17 K	6/15 6/17	15/6	-	-
	IT-TIMER	-	-	-	6/15 K 6/17 K	6/15 6/17	15/6	-	-
	TERMSERIES TIMER	10/6	12/6	-	-	-	-	-	-
	MCZ TO	10/6	12/6	-	-	-	-	-	-
FUNCTIONAL SAFETY	SAFESERIES	-	-	-	6/15 K 6/17 K 9/11 K 6.6/20	6/15 6/17	15/6	18/9.5 K	18/9.5
	RIDERSERIES FG	-	-	-	6/15 K 6/15 RIDER	6/15	15/6	-	-
POWER SWITCH	PSSR (1-phase)	-	-	-	6/15 RIDER	-	-	-	-
	PSSR (3-phase)	-	-	-	9/20	-	-	-	-
	PWR	-	-	-	6/15 K 6/17 K 9/11 K	6/15 6/17	15/6	18/9.5 K	18/9.5

*Markability only given when using two partition plates side by side

WS 10/6 MultiCard

TERMSERIES: 6.4 mm and 12.8 mm socket, Partitions plates, Interface Adapter, MCZ-SERIES, MICROOPTO, TERMOPTO, TERMSERIES TIMER, MCZ TO		Colour	Order No.
WS 10/6 M MC NE WS		○	1818400000
WS 10/6 M MC NE GE		●	1917430000
WS 10/6 M MC NE BL		●	1069080000
WS 10/6 M MC NE GN		●	1917420000
WS 10/6 M MC NE RT		●	1917440000

Note: Use two markers side by side on the 12.8 mm socket for an ideal marking result



WS 10/12 MultiCard

TERMSERIES: 12.8 mm socket		Colour	Order No.
WS 10/12 MC NE WS		○	1905970000
WS 10/12 MC NE GE		●	1466140000



WS 12/6 MultiCard

TERMSERIES Interface Adapter, MICROOPTO, TERMOPTO		Colour	Order No.
WS 12/6 MC NE WS		○	1609900000
WS 12/6 MC NE GE		●	1773551687
WS 12/6 MC NE BL		●	1773551693
WS 12/6 MC NE VI		●	1773551689
WS 12/6 MC NE RT		●	1773551686
WS 12/6 MC NE OR		●	1773551690
WS 12/6 MC NE BR		●	1773551692



WS 12/6 MultiMark

TERMSERIES: 6.4 mm and 12.8 mm socket, Partitions plates, Interface Adapter, MCZ-SERIES, MICROOPTO, TERMOPTO, TERMSERIES TIMER, MCZ TO		Colour	Order No.
WS 12/6 MM WS		○	2007200000



WS 12/8 MultiMark

TERMSERIES: 12.8 mm socket		Colour	Order No.
WS 12/8 MM WS		○	2007210000

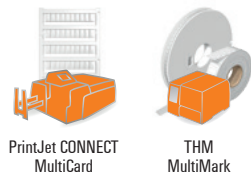


WAD 5 MultiCard

TERMSERIES Interface Adapter		Colour	Order No.
WAD 5 MC NE WS		○	1112910000
WAD 5 MC NE GE		●	1112920000

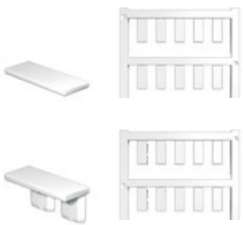


Picking the right Selection guide



ESG 6/15 MultiCard

RIDESERIES: RCI: Relays, Retaining clip ⁵ , KITS / RCM: Relays, Retaining clip ⁶ , KITS D-SERIES: DRI/DRM/DRL/DRH/DRW/DRR Relays, DRI/DRM KITS TFI-SERIES, IT-TIMER, SAFESERIES, PWR, RIDERSERIES FG		
	Colour	Order No.
ESG 6/15 K MC NE WS	○	1880100000
ESG 6/15 K MC NE GE	●	1880130000
RIDESERIES RCI: Sockets ¹ , KITS		
ESG 6/15 SRC-I MC NE WS	○	2558350000
D-SERIES DRI: Sockets ² , Retaining Clip ⁷ , KITS		
ESG 6/15 SDI MC NE WS	○	2558340000
RIDERSERIES FG, PSSR (1-phase)		
ESG 6/15 RIDER MC NE WS	○	1881280000



ESG 6/15 MultiMark

RIDERSERIES: RCI: Relays, Retaining clip ⁵ , KITS / RCM: Relays, Retaining clip ⁶ , KITS D-SERIES: DRI/DRM/DRL/DRH/DRW/DRR Relays, DRI/DRM KITS TFI-SERIES, IT-TIMER, SAFESERIES, PWR, RIDERSERIES FG		
	Colour	Order No.
ESG 6/15 MM WS	○	2619940000
ESG 6/15 MM GE	●	2619950000
ESG 6/15 MM GR	●	2619960000



ESG 6/17 MultiCard

RIDESERIES: RCM: Retaining clip ⁶ , KITS D-SERIES: DRM/DRL/DRW/DRH/DRR Relays, DRM KITS TFI-SERIES, IT-TIMER, SAFESERIES, PWR		
	Colour	Order No.
ESG 6/17 K MC NE WS	○	1880120000
ESG 6/17 K MC NE GE	●	1880110000



ESG 6/17 MultiMark

RIDESERIES: RCM: Retaining clip ⁶ , KITS D-SERIES: DRM/DRL/DRW/DRH/DRR Relays, DRM KITS TFI-SERIES, IT-TIMER, SAFESERIES, PWR		
	Colour	Order No.
ESG 6/17 MM WS	○	2005100000
ESG 6/17 MM GE	●	2005110000
ESG 6/17 MM SW	●	2005130000
ESG 6/17 MM GR	●	2005120000



ESG 6.6/20 MultiCard

SAFESERIES	Colour	Order No.
ESG 6.6/20 BHZ 5.00/04	○	1082540000



ESG 9/11 MultiCard

D-SERIES: DRL 3/4 CO /DRW/DRH/DRR Relays SAFESERIES, PWR	Colour	Order No.
ESG 9/11 K MC NE WS	○	1857440000



ESG 9/20 MultiCard

PSSR (3-phase)	Colour	Order No.
ESG 9/20 MC NE WS	○	1609940000
ESG 9/20 MC NE GE	●	1766160000
ESG 9/20 MC NE TK	●	1866690000



ESG 9/26 MultiCard

RIDESERIES RCM: Sockets ⁸ , KITS	Colour	Order No.
ESG 9/26 SCM-I MC NE WS	○	2558330000
D-SERIES DRM: Sockets ⁴ , Retaining clip ⁹ , KITS		
ESG 9/26 SCM ECO MC NE WS	○	1520980000
ESG 9/26 SCM ECO MC NE GE	●	1520990000
ESG 9/26 SCM ECO MC NE GR	●	1521000000



SM 18/9.5 MultiCard

D-SERIES: DRL 4 CO /DRW/DRH/DRR Relays SAFESERIES, PWR	Colour	Order No.
SM 18/9.5 K MC NE WS	○	1248580000
SM 18/9.5 K MC NE GE	●	1248590000
SM 18/9.5 K MC NE GR	●	1248610000



SM 18/9.5 MultiMark

D-SERIES: DRL 4 CO /DRW/DRH/DRR Relays SAFESERIES, PWR	Colour	Order No.
SM 18/9.5 MM WS	○	2006220000
SM 18/9.5 MM GE	●	2006240000
SM 18/9.5 MM SW	●	2006200000
SM 18/9.5 MM GR	●	2006260000



THM 15/6 MultiMark

RIDERSERIES: RCI: Relays, Retaining clip ⁵ , KITS / RCM: Relays, Retaining clip ⁶ , KITS D-SERIES: DRI/DRM/DRL/DRH/DRW/DRR Relays, DRI/DRM KITS TFI-SERIES, IT-TIMER, SAFESERIES, PWR, RIDERSERIES FG		
	Colour	Order No.
THM GEW 15/6 WS	○	1059780000
THM GEW 15/6 GE	●	1059790000



¹ SRC-I 2CO, SRC-I 2CO N, SRC-I 2CO P

² SDI 1CO P, SDI 2CO P, SDI 1CO, SDI 2CO

³ SCM-I 2CO, SCM-I 2CO P, SCM-I 3CO N, SCM-I 4CO, SCM-I 4CO N, SCM-I 4CO P

⁴ SCM 2CO P, SCM 4CO P, SCM 2CO ECO, SCM 4CO ECO

⁵ SRC-I CLIP HP

⁶ SCM-I CLIP N, SCM-I CLIP P

⁷ SDI CLIP P

⁸ SCM CLIP P

Communication. Performance. Quality.

PrintJet CONNECT



Your direct connection to an optimal marking process

The PrintJet CONNECT is the consequent advancement of our well-proven Print-Jet series. Designed to meet the modern requirements of industry and control cabinet construction, it combines maximum process and cost efficiency with intelligent networking and complete data consistency. For example, you can use existing data directly for marking – for more efficient work with fewer failures.

The PrintJet CONNECT is part of the Weidmüller marking system consisting of software, markers and printers. It has a particularly durable industrial print head and was designed primarily for the fast marking of medium to large quantities and for continuous operation.

The PrintJet CONNECT is suitable for printing all plastic or metal markers of the MultiCard or MetalliCard family. It achieves brilliant printing results with high durability on all media.

Your advantages:

- Flexible connection possibilities
- Simple function monitoring on the device
- High level of automation thanks to magazine capacity of 50 MultiCards
- Durable and robust markers thanks to thermal fixing
- User-friendly thanks to intuitive touch display
- Can be used as stand-alone solution



Type	Order No.
PRINTJET CONNECT	2715590000

The compact all-rounder

Thermal transfer printer THM MultiMark



The only printer you will need for your marking tasks

The THM MultiMark is a compact and modularly constructed thermal transfer printer that makes full use of its many advantages and high number of potential uses. The integrated cutting and perforation option enables continuous materials to be cut to any length – making your work considerably easier when it comes to cutting and assigning the respective labels.

The printer edits markers and labels from the MultiMark family as well as continuous materials, textile and polyester labels, heat shrink sleeves and PLC labels. Snap-on terminal markers are printed using a separate print contact pressure roller, which can be changed in just 30 seconds.

Another plus: the device is very easy to operate thanks to an intuitive touch display and clear status indicators – in 22 languages. The compact design and low weight of 3.5 kg also ensures that the THM MultiMark really can be used anywhere, e.g. as a mobile printer for your on-site jobs.

Your advantages:

- A printer for all jobs
- Ideal for small and medium print volumes
- Virtually maintenance-free thanks to thermal transfer technology
- High output, from 250 Dekafix markers/min.
- Flexibility provided by modular perforation and cutting unit
- The contact pressure roller can be changed in 30 seconds
- Excellent readability (Resolution: 300 dpi)



Type	Order No.
THM MULTIMARK	2599430000
THM MULTIMARK PLUS	2599440000

Weidmüller – Your partner in Industrial Connectivity.

As experienced experts we support our customers and partners around the world with products, solutions and services in the industrial environment of power, signal and data. We are at home in their industries and markets and know the technological challenges of tomorrow. We are therefore continuously developing innovative, sustainable and useful solutions for their individual needs. Together we set standards in Industrial Connectivity

We cannot guarantee that there are no mistakes in the publications or software provided by us to the customer for the purpose of making orders. We try our best to quickly correct errors in our printed media.

All orders are based on our general terms of delivery, which can be reviewed on the websites of our group companies where you place your order. On demand we can also send the general terms of delivery to you.

Weidmüller Interface GmbH & Co. KG
Klingenbergstraße 26
32758 Detmold, Germany
T +49 5231 14-0
F +49 5231 14-292083
www.weidmueller.com

Personal support can
be found on our website:
www.weidmueller.com/contact

Made in Germany

08/2021/TCD