

Pioneering Products, Solutions and Services

Your Partner in Smart Industrial Connectivity



Weidmüller 

A Global Player from East Westphalia-Lippe

We are where our customers are





Technologies help overcome hurdles

We create access

Be it automobile manufacturing, electricity production or water management – hardly any of today's industries can do without electronics and electrical connectivity. And in this internationalised world characterized by technological change, the associated requirements are rapidly becoming more complex due to the emergence of new markets. New, more varied challenges have to be overcome, and the solutions to them will not be found in high-tech products alone. Connectivity is the key, whether it involves power, signals and data, demands and solutions or theory and practice. Industrial Connectivity needs connections. And that is precisely what we stand for.

Shaping the digital transformation together

As pioneers of Industrial Connectivity, we are taking the next logical step into digitalisation – both in our own production and in the development of products, solutions and services for Smart Industrial Connectivity and the Industrial Internet of Things. In partnership, we support our customers in the digital transformation, the distribution of power, signals and data and the development of new business models.



Chapter

- | | |
|-----------|---|
| 01 | Connectivity
Page 8 |
| 02 | Electronics
Page 16 |
| 03 | Automation & Software
Page 24 |
| 04 | Workplace & Accessories
Page 30 |
| 05 | Assembly
Page 36 |
| 06 | Customised solutions
Page 40 |
| 07 | Service & Support
Page 50 |



Our markets

As individual as our customers





Our customers' markets are our home. With passion and comprehensive know-how, we develop innovative solutions for our customers' challenges, whether in the automotive industry, in transport, in conventional power generation or in the field of renewable energies.

Together with our customers and partners, we meet the challenges of the various industries with cutting-edge and innovative solution concepts from a single source that go with the trend of digital transformation.

Machine & Factory Automation

 Consumer Goods & Packaging	 Automotive & Suppliers
 Elevators & Escalators	 Intralogistics

Energy

 Wind	 Photovoltaics
 Hydrogen	 Transmission & Distribution


Transport

 Railway	 Marine
---	--





Process

 Water treatment	 Oil & Gas
 Chemical & Pharmaceuticals	 Glass

Building Infrastructure

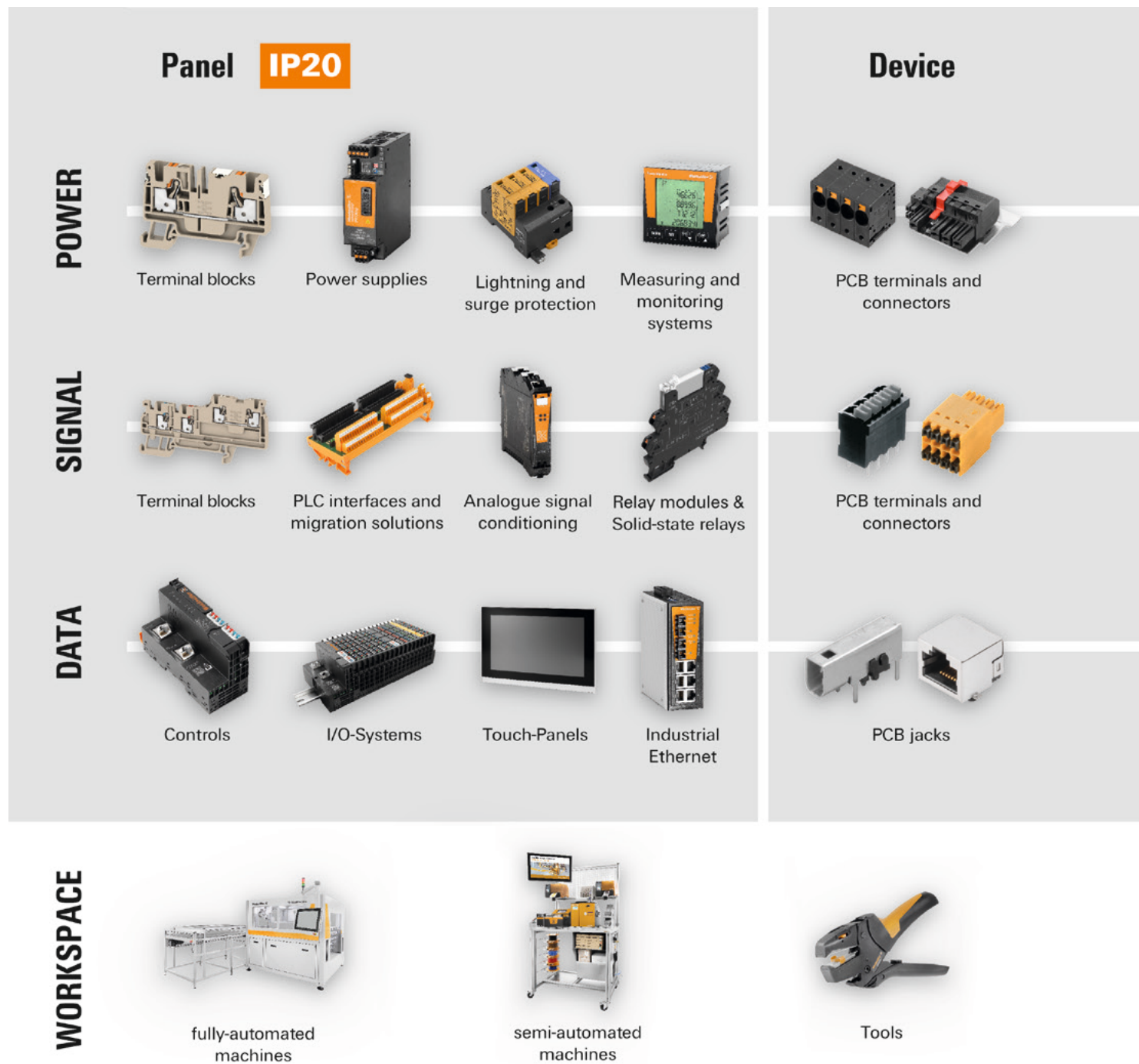
 Office buildings	 Industrial buildings
 Commercial buildings	 Official buildings

Device Manufacturers

 Robotics	 Control devices
 Telecommunications devices	 Power electronics

From the panel via the device to the field

Our products at a glance



Field

> IP20 ... IP69K



Heavy duty
connectors



Distribution
boxes



PV Combiner
Boxes



Enclosure
Systems



Cable entry
systems



Fieldbus
distributors



Service
interfaces



Cord sets,
patchcords and
cables



IP67
I/O-Systems



Sensors

Software & Cloud



Industrial Analytics &
IIoT-Services



Edge-Operating system,
Engineering- and
visualization tools



Weidmüller
Configurator



Printers



Markers

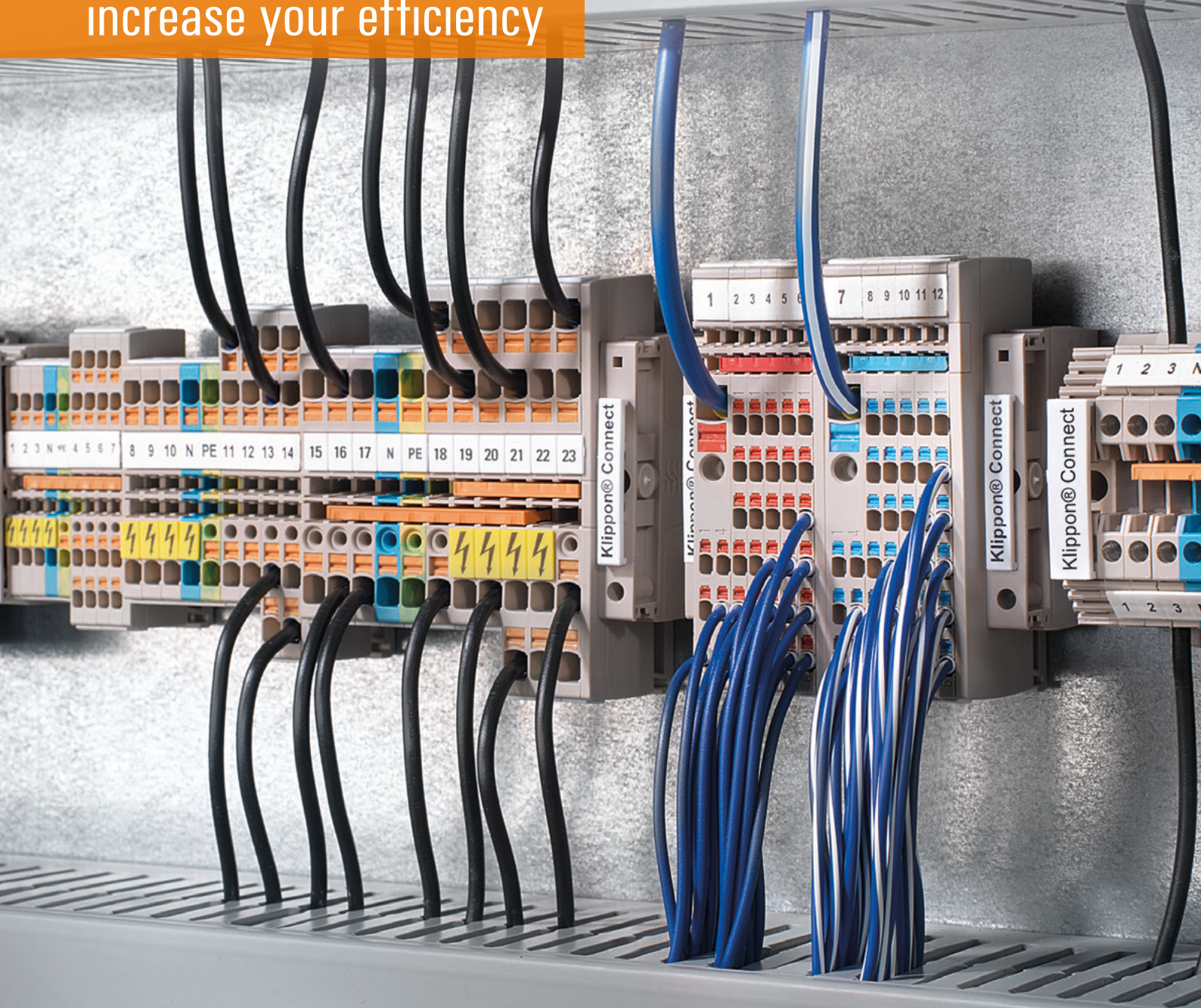


Marking software

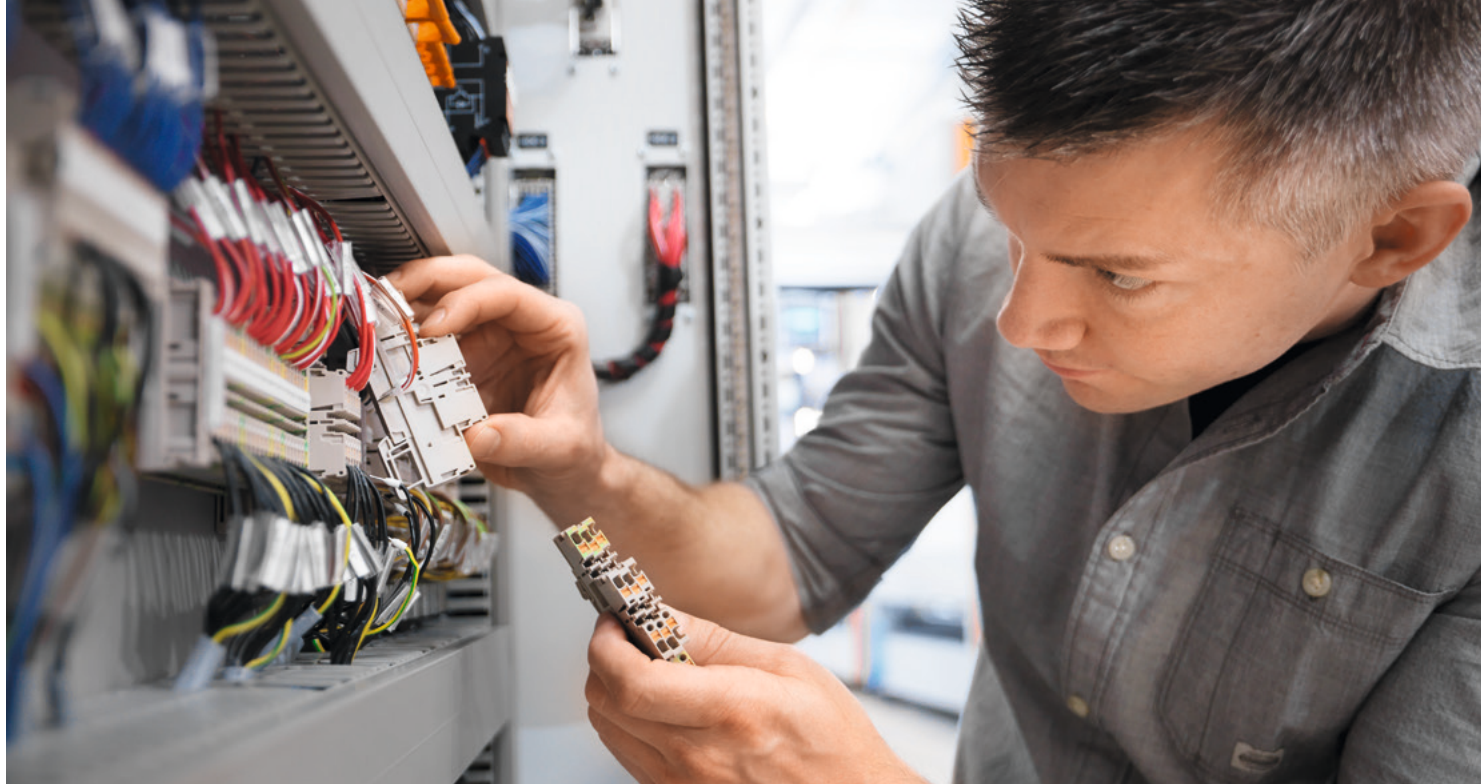
Connectivity

Well thought-out connections

increase your efficiency



www.weidmueller.com/connectivity



Power
feed-in



Power
distribution



Control
voltage
distribution



Current and
voltage trans-
former wiring



Signal
wiring



DCS
marshalling



Shielding and
earthing



Building
installation
wiring



The pioneering connectivity solution

Klippon® Connect terminal blocks

Whether it is easy handling, more space in the control cabinet or time savings during installation: Klippon® Connect ensures you numerous advantages throughout the entire panel building process.

Application range

There are applications in the control cabinet that are an integral part of almost any area of use. We have closely examined them to make your work easier for you. The result: our innovative Klippon® Connect application products.

Universal range

With the Klippon® Connect universal range, we offer you a complete range of standard products with all common connection systems and functions.



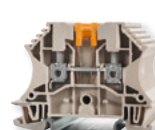
Spring connection with
SNAP IN technology



Spring connection with
PUSH IN technology



Spring connection
with tension clamp
technology

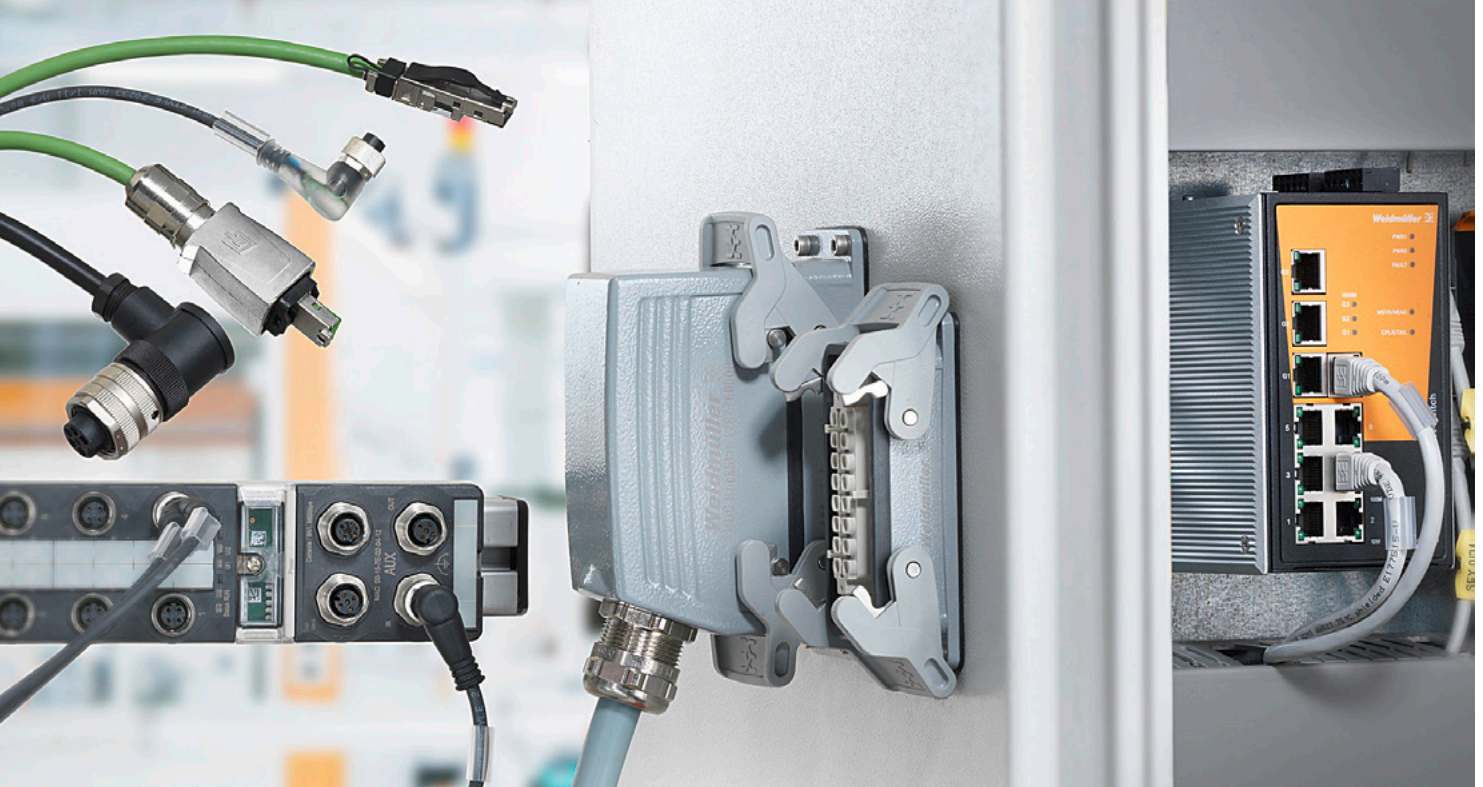


Srew connection
with clamping yoke
technology



Srew connection with
stud technology





Connection solutions for the transmission of power, signals and data

Whether it is circular connectors for signal processing between the sensor and the controller or heavy-duty IP67 connectors for power transmission at the carriage transition of high-speed trains – Weidmüller offers suitable connection solutions for the transmission of power, signals and data between the field level and the control cabinet.

Our range is also complemented by our customised assembly services. In this way, we help to manage even the most complex cabling projects with ease and are the best partner for implementing complete connection solutions – from individual connectors to cabling concepts and smart solutions for the systems of the future.

Your benefits at a glance:

- All relevant connectors for industrial applications
- Developed, tested and manufactured for the highest requirements
- Requirements of worldwide standards 100 % fulfilled





Tailor-made connections across the board

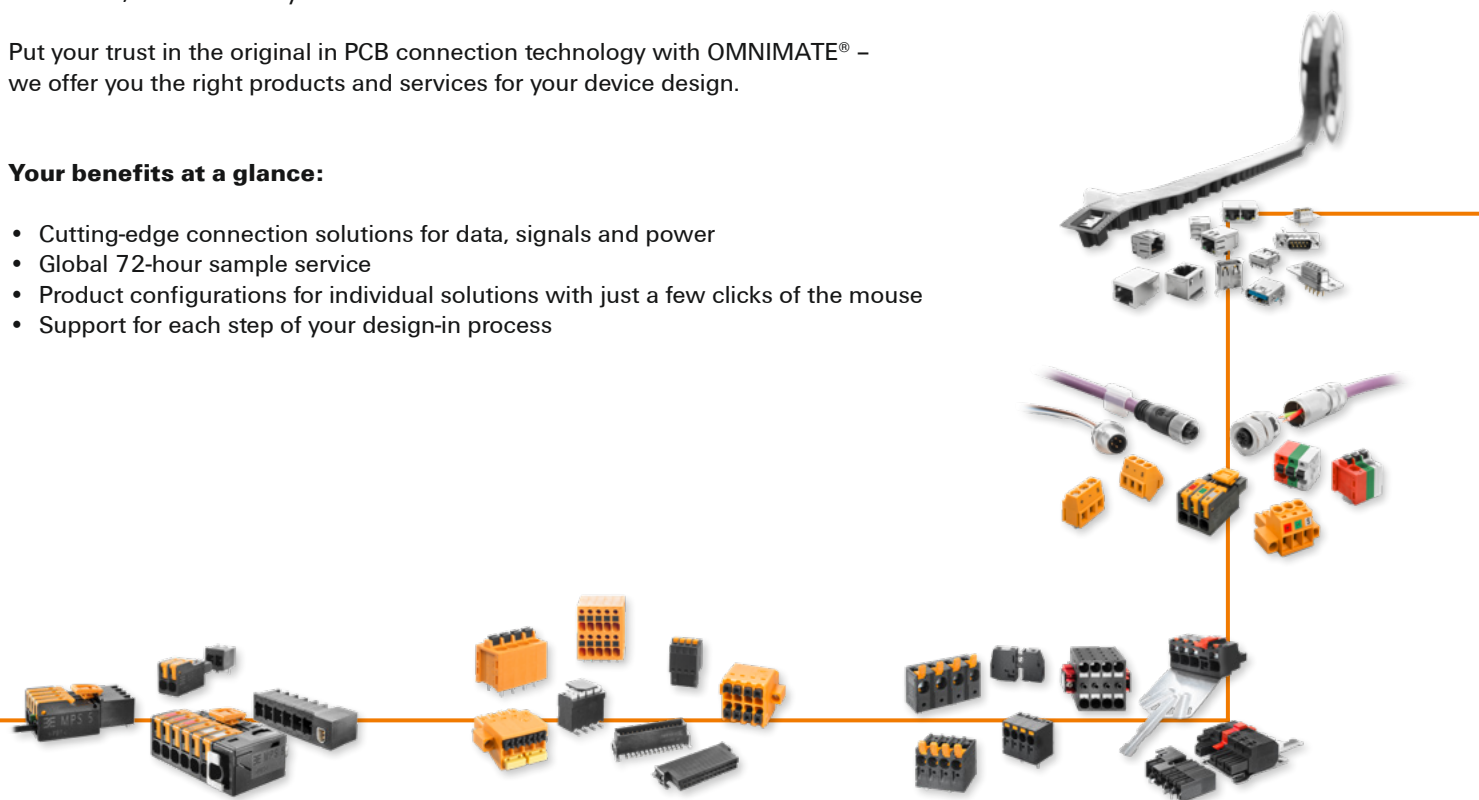
OMNIMATE® device connectivity

Device designs are smaller, more powerful and more cost-effective with each new generation. Accordingly, the connection system for more compact sizes must transfer high currents to the printed circuit board reliably and with minimum losses. At the same time, a mechanically stable connection must be ensured.

Put your trust in the original in PCB connection technology with OMNIMATE® – we offer you the right products and services for your device design.

Your benefits at a glance:

- Cutting-edge connection solutions for data, signals and power
- Global 72-hour sample service
- Product configurations for individual solutions with just a few clicks of the mouse
- Support for each step of your design-in process





Secure protection for your components Klippon® Protect enclosure systems

Enclosures fulfil an important safety function and prove their worth every day, even under the toughest conditions. Every industry has its own specific requirements for enclosure technology. At the same time, the enclosures must meet the strict requirements of the international approvals.

Our Klippon® Protect enclosure system has all the approvals required for use in industrial and explosive risk zones. In addition, it can be optimally adapted to your needs. We round off our range with individual services to provide you with the best possible support for your processes.

Your benefits at a glance:

- Innovative enclosure concepts for outstanding performance
- Robust and safe enclosures for the highest protection requirements
- Comprehensive range of service





Simple, fast and safe cable entry

Cable glands & Cabtite

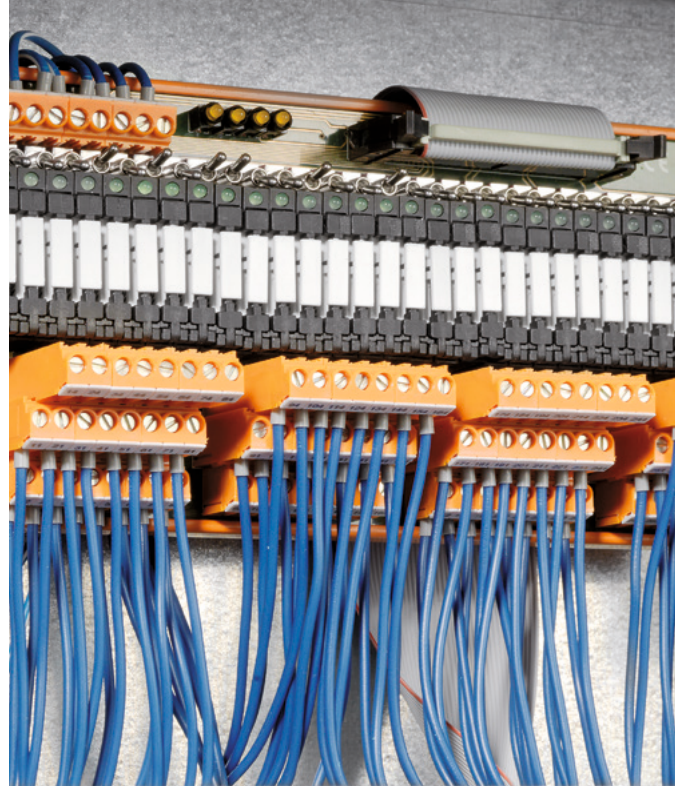
We offer a variety of add-on components for a multitude of applications in addition to its wide range of enclosures. These include standard cable glands made of brass, plastic and stainless steel for industrial applications and hazardous areas.

Another alternative is our modular cable entry system Cabtite, which saves you time, space and costs while offering you maximum flexibility.

Your benefits at a glance:

- High IP ingress protection class with IP66
- Integrated strain relief
- Installation safety through acoustic feedback
- Quick adaptation of cable management





Plug-and-produce solutions

Connection lines, patch cables and cables

Through continual modularisation and decentralisation, the need is growing for standardised plug-and-produce solutions that are efficient to both install and operate.

Choose from our extensive range of pre-assembled cables, or use our online configurator to create customised signal or data cables.

Your benefits at a glance:

- Customised solutions from batch size 1
- Suitable for use in robots and with recyclable, halogen-free cables
- Online configurator for customised variants

Fast exchange of PLC systems

PLC / DCS System Cabling & Migration Solutions

The increasing complexity of machines and plants makes wiring between controls, sensors and actuators a real challenge.

As an alternative to traditional individual wiring, interface modules and ready-to-connect multi-core cables offer considerable savings potential.

Your benefits at a glance:

- Efficient exchange without downtime
- Suitable for all common control systems
- Compact design saves space in the control cabinet
- Time savings of up to 95 %





Simple access to the inside of the control cabinet

FrontCom® Vario

Attaching protected service interfaces to the housing walls of your panels is a simple, well-proven solution used to effectively boost your system's availability and productivity.

You can then grant your technicians quick and safe access to the control elements and functional electronics in the control cabinet at any time – without having to open it.

Your benefits at a glance:

- Many functions, one single frame – space-saving
- 5,000 possible combinations for increased flexibility
- Fast reading of product data



The modular base for decentralised automation

Distribution Boxes

Modern automation solutions are becoming increasingly decentralised. Accordingly, there is a need for components that can be easily integrated into the automation systems commonly available on the market and whose connection is more efficient than time-consuming individual wiring.

Flexible distribution boxes enable reliable, decentralised signal and power transmission with a protection class of up to IP67 – wherever you need the distribution boxes.

Your benefits at a glance:

- Modular decentralisation in all areas
- Protection class up to IP67
- Certified for worldwide use



Electronics

Reliable, safe and innovative solutions



www.weidmueller.com/electronics





Reliable and durable relay modules and solid-state relays

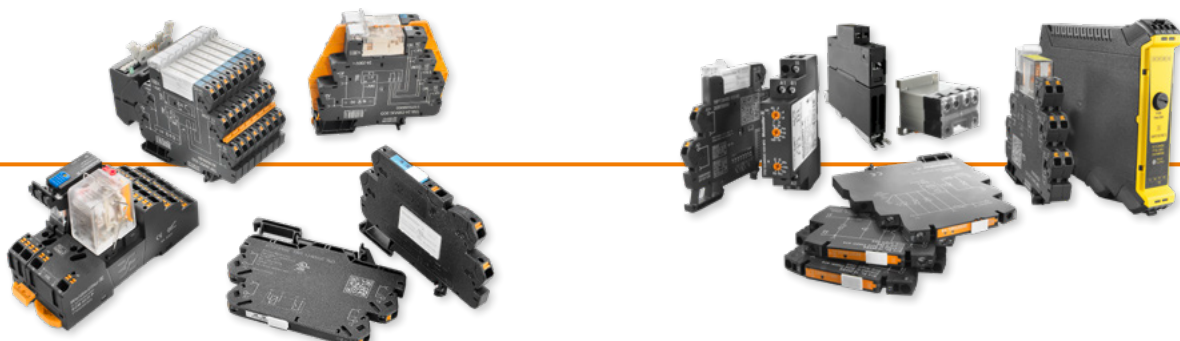
Switch to simple – with Klippon® Relay modules

Optimising the control cabinet infrastructure is our daily motivation. Whether switching, isolating, amplifying or multiplying: relays perform a wide range of different tasks in industrial applications.

They have very specific properties and there is an almost unmanageable variety of them available on the market. Our Klippon® Relay portfolio convinces with reliable, safe and resilient products.

Your benefits at a glance:

- Maximum relay variety, matching accessories and service
- High-quality, well-designed products
- Comprehensive support for the right product selection
- Space-saving thanks to compact, slim design types
- Robustness and cost efficiency in all application environments





Protect, convert, isolate and visualise digital and analogue signal values

Analogue signal processing

Considering the increasing automation, isolating amplifiers are required, which convert, isolate, monitor, protect and visualise your digital and analogue signal values from industrial and process automation, e.g. temperature, pressure, level, flow volumes, weight and speed.

Our signal converters for DC standard signals, isolation amplifiers for 4 to 20 mA and 0 to 10 V, switching amplifiers, frequency converters and threshold switches are characterised by high level of accuracy, universality and a wide assortment of variants.

Your benefits at a glance:

- Protecting, converting and isolating signals reliably and precisely
- Narrow as well as flat design – suitable for all applications
- Quick and easy configuration with software, integrated display or dip switches





Power management solutions and services for every need

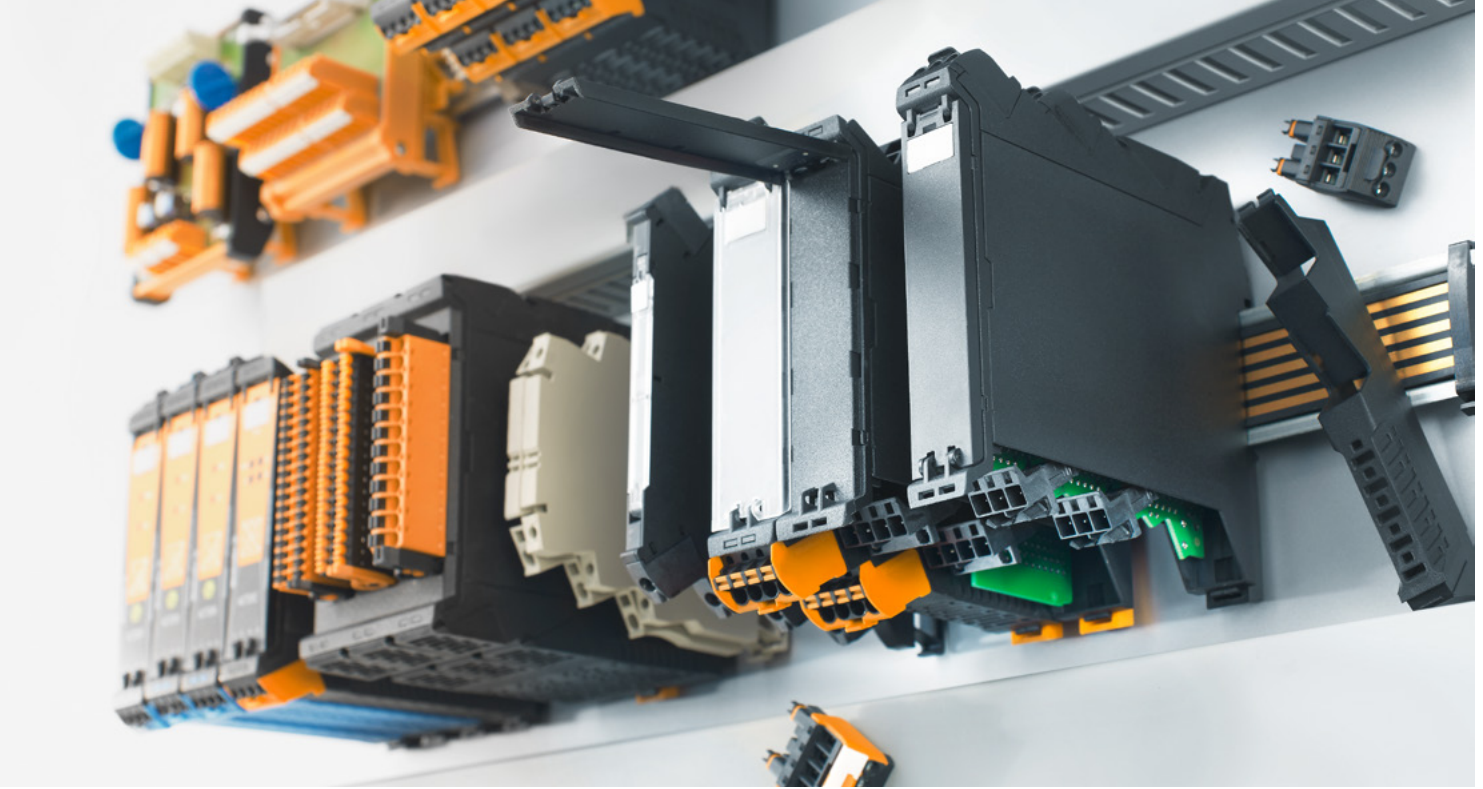
Power supplies

Power supplies have become an indispensable part of the modern world, because everything has to be supplied with current. Three factors in particular play a major role in this: energy efficiency, durability and reliability. Weidmüller offers a wide range of solutions that perfectly meet the diverse requirements of the machine construction, power, shipbuilding and process industries. Our switched-mode power supplies feature cost-effectiveness, performance and innovation, ensuring that the right power management solution can be implemented for every panel.

Your benefits at a glance:

- Modular: three performance classes and various accessories
- Tailor-made solutions for your industry
- More reliable systems and prevention of production downtimes
- DCL technology, IO-Link module with integrated ORing MOSFET





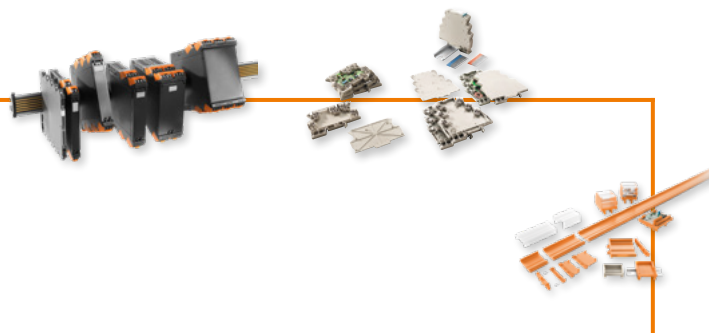
Electronics safely packaged

Tailored enclosure systems

From standard to customised mass production – with our enclosure systems, we offer you solutions that are perfectly suited for the installation of industrial electronic components in control cabinets. These form a future-proof platform for your applications in the fields of control, signal conversion and machine safety.

Your benefits at a glance:

- Modular concepts for maximum design freedom
- Highest packing density and easy handling
- Cost and time savings over the life cycle
- Raspberry Pi housing - the modular, smart and simple box





Connection of intelligent field devices to your fieldbus segments

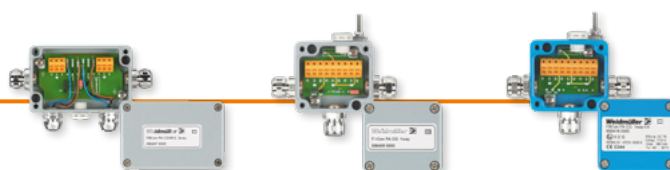
FBCon fieldbus distributors

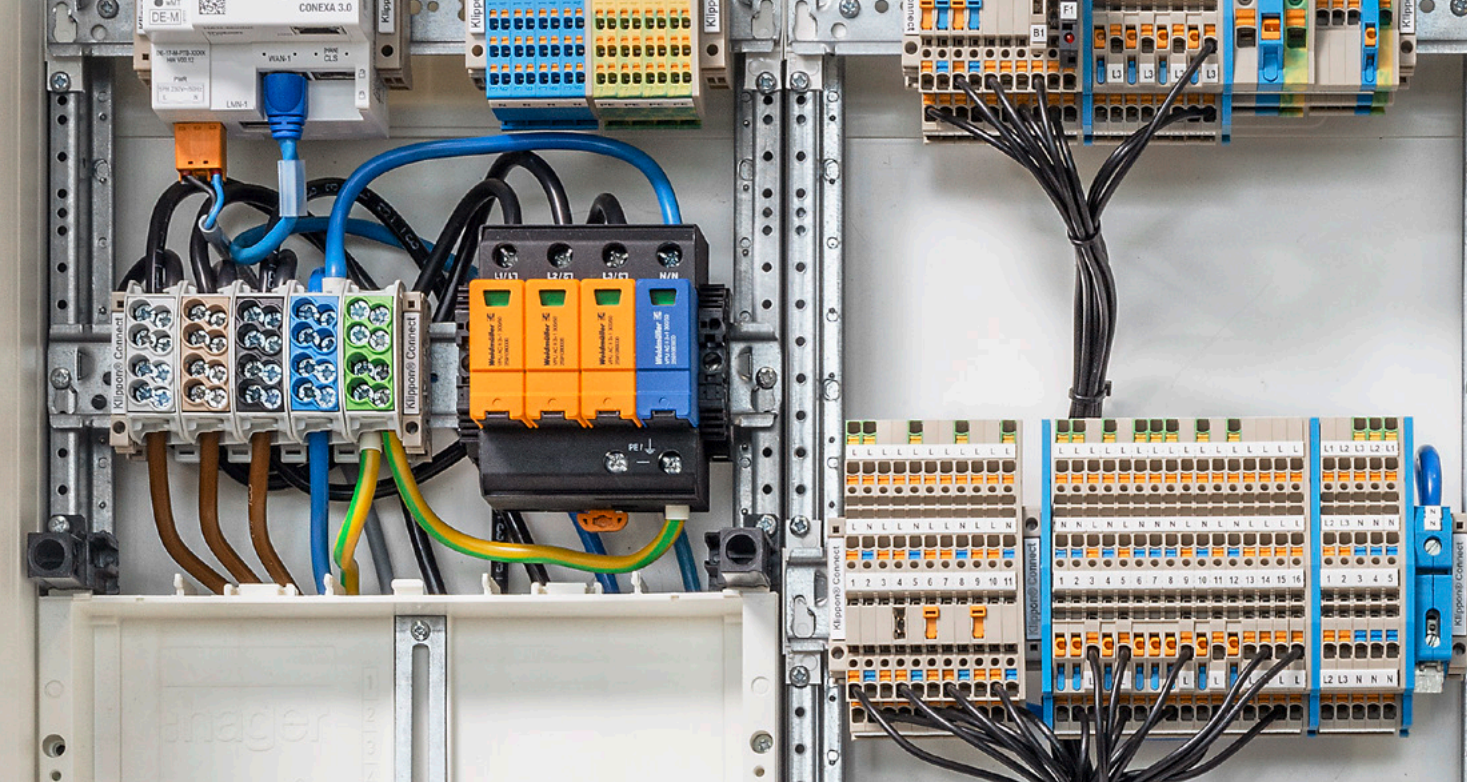
With our FBCon fieldbus distributors, you connect devices in the field to fieldbus segments for PROFIBUS PA, Foundation Fieldbus H1, PROFIBUS DP and Modbus RS485 in protection class IP66.

Our FBCon fieldbus distributors have EMC cable glands with high shield attenuation and are available in an aluminium or stainless-steel version as well as ATEX variants for potentially explosive atmospheres. FBCon with integrated current limiting protect the bus communication in case of a short circuit of the unit in the field.

Your benefits at a glance:

- Broad operating temperature range from -40 °C to +80 °C
- Flexible installation in the field
- Versatile fieldbus connection options





Reliable protection for your plants, devices, machines and energy grids

VARITECTOR lightning and surge protection

Industrial plants and building infrastructures are becoming increasingly complex. This makes them more sensitive to lightning and surge damage.

In addition, digitalisation is increasing the number of connections and data streams that must not be interrupted. Reliable lightning and surge protection ensures system availability, protects against data loss, and increases added value.

Your benefits at a glance:

- Protecting your investment, your processes and your data
- Reliable and well-thought-out products and solutions
- Compliance with all required norms and international standards





Easy, fast, and safe wiring of residential and commercial photovoltaic systems

Surge protection and emergency shutdown with PV Inline, PV Next and PV Next Fireman Switch

With PV Next, Weidmüller offers the world's first combiner box concept based on a standardised printed circuit board design. PV Next protects the PV system against surge voltages and short circuits and also offers the option of combining strings. The various designs protect all string inverters available on the European market.

The PV Next Fireman switch offers the proven overvoltage protection in combination with an automatic emergency shutdown for commercial buildings in the event of fire.

PV Inline completes the portfolio as a particularly compact surge protection device with SPD type I+II for confined installation environments. It can be integrated into cable channels or mounted behind PV modules.

Your benefits at a glance:

- Particularly compact dimensions for space-saving installation
- Core range immediately available from stock
- Versions with automated shutdown in case of fire available



Automation & Software

u-mation. More than Automation. IIoT Solutions



www.weidmueller.com/automation_software



Master increasing complexity systematically

Controls & Edge

Implement small, large, and networked control solutions flexibly with high-performance, modular controller hardware.

With u-control and the matching engineering environment from our u-mation portfolio, we provide you with a flexible control solution for automation or digitalisation. Choose your new operating system u-OS for Industrial IoT and Automation.

Your u-control benefits at a glance:

- Compact with a width of only 54 mm
- Compatible with most of the u-remote portfolio
- "Securitybydesign" concept and continuous testing
- Perfectly integrate automation solutions into the IoT with u-control M3000 & M4000





Reliability in the transmission of signals and data

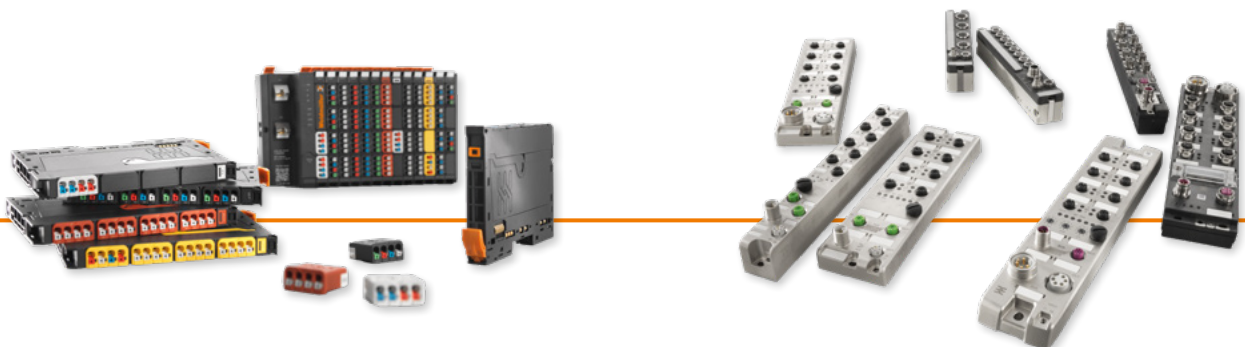
I/O system u-remote

Our I/O system u-remote offers the perfect solution for all common fields of application in mechanical and plant engineering.

Whether as a pure control cabinet system, in mixed IP20 and IP67 applications or even positioned directly in the field for signal connection – u-remote grants you all the freedom you need for a flexible I/O architecture and gives you with the advantages of an integrated complete system.

Your benefits at a glance:

- Flexible system design and cabling
- Absolutely reliable in the transmission of signals and data
- Real-time data transmission





Powerful visualisation of HMI applications

u-view panel monitors

The Industrial IoT is not only changing process flows; it is also constantly increasing the demands on analysis, maintenance and operation options.

Our u-view touch panels are available in basic and advanced versions. The web-based and scalable software u-create PROCON-WEB gives you control over the entire process chain.

Your benefits at a glance:

- Robust aluminium housing with IP66 protection class
- First-class image quality and powerful processors
- Operation via modern touch technology



Your own individual energy management system

Measuring and monitoring systems

Energy management is a triad of recording all relevant energy consumption data, analysing the information obtained, and comprehensive consulting on possible saving potential. We at Weidmüller see the development of an energy management system as a holistic task which combines expert advice with intelligent hardware and software solutions to form a strong unit which is modular in design and therefore tailored to your requirements.

Your benefits at a glance:

- Increased efficiency through status recording
- Increase energy efficiency
- Maximisation of plant availability





Industrial data transmission with network devices

Industrial Ethernet

As a full-range supplier of industrial network infrastructures for plant and machine construction, we have a wide range of switches for the specific requirements of our customers – from Gigabit switches, media converters, Power-over-Ethernet switches, WLAN devices to serial/Ethernet converters.

We always have you firmly in mind and pursue the goal of meeting the highest demands and enabling reliable as well as flexible Ethernet communication.

Your benefits at a glance:

- Ensuring uninterrupted network operation
- PROFINET Class B, EtherNet/IP and CC-Link
- High resistance

Remote access made easy

u-link

u-link guarantees quick and secure access to machines and plants, while also allowing forefficient management of manufacturing plants, user clients, access rights or firmware versions. The u-link interface can be configured without expert knowledge and adapted to processes.

Safeguarded servers in Europe also provide an online platform that ensures conformity between different IT systems for remote maintenance.

Your benefits at a glance:

- Connect your machine with just one click
- Secure remote access
- Open device topology and data export
- Clear dashboards





Use Machine Learning without prior knowledge of Data Science

ModelBuilder and edgeML

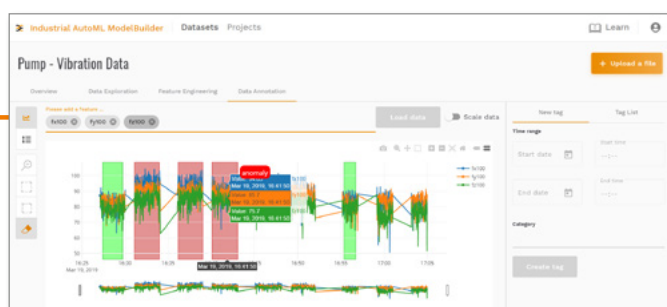
As a machine or process expert, you can easily build and run machine learning models quickly and easily without prior knowledge in data science.

The ModelBuilder empowers you to transfer your data and domain knowledge into ML (Machine Learning) models that generate value to your business.

edgeML makes it possible for engineers to integrate ML models into automation in a particularly easy and flexible way – regardless of the hardware and using the standard ONNX format. This allows machines or processes to be monitored directly onsite without delays or extra costs.

Your benefits at a glance:

- Benefit from advanced analytics without additional training
- End-to-end solution
- Build customer relationships and new business models



Wide scalable web HMI/SCADA solution

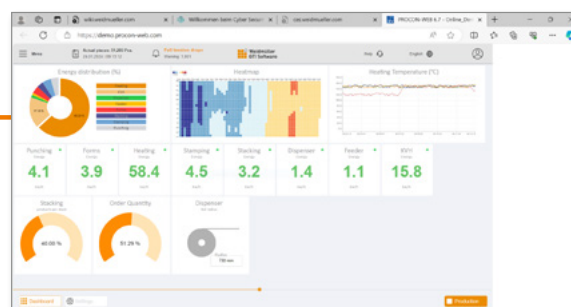
PROCON-WEB

The innovative HMI PROCON-WEB is the ideal human-to-machine interface. Important system features such as adaptive design for device-specific interfaces, support for a comprehensive range of communication drivers incl. OPC-UA, multi-lingual function and country-specific keyboard layouts, as well as simple engineering without programming expertise are the basis for a powerful and open system.

Choose from two variants: PROCON-WEB ES for embedded systems as a platform-neutral solution or PROCON-WEB SCADA as a windows-application for complex tasks.

Your benefits at a glance:

- Modern intuitive UI can be adapted to your corporate design
- Flexible and high performance
- Open via interfaces and plug-ins
- Powerful alarming, logging and historian functions



Workspace & Accessoires

Practical advantages for optimised work processes





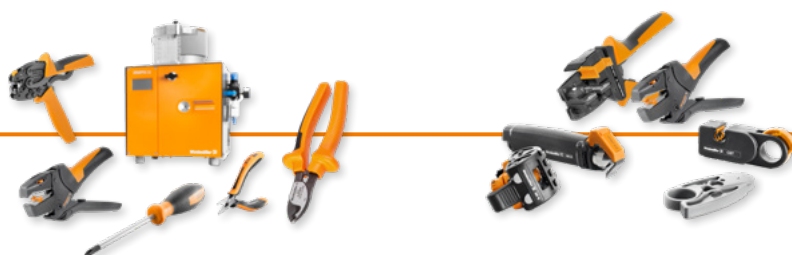
The right tool for every application

Professional tools with practical advantages

Our range includes professional manual tools for cutting, stripping, crimping, testing and screwing. The assortment is supplemented by tool sets that sensibly and efficiently combine tools and matching accessories.

Your benefits at a glance:

- Our tools certification ensures increased safety and handling
- Flexibility of shape and function
- High efficiency and ergonomics
- Multiple actions per operation possible
- Valuable time saving





Professional solutions for systemised marking

Industrial printing systems

Weidmüller marking systems are a fast and efficient way to produce markings and labels – e.g. for terminal blocks, wires, cables, and devices.

Our PrintJet CONNECT inkjet printer and MultiMark thermal transfer printer work fast and offer excellent print quality. The M-Print® PRO software makes identifying your electrical equipment convenient. The Klippon® Automated RailLaser, in conjunction with the Weidmüller Configurator (WMC), enables fully automatic marking of pre-assembled terminal strips.

Your benefits at a glance:

- Intuitive to use
- Constructive solutions for all control cabinet-related applications
- From shrink sleeves to metal markers
- Ink or thermal transfer technology – industrial printing systems for every requirement
- Designed with a glimpse into the future
- Fast and efficient marking of equipped mounting rails





Planning reliability through data consistency

Software solutions

With our software solutions for marking (M-Print® PRO), semi-automated wire processing (WPC tool) and configuration (WMC), you are perfectly prepared for every project phase.

Thanks to interfaces to your eCAD system, you benefit from optimum data transmission from planning to commissioning.

Your benefits at a glance:

- Easy import, editing and management of data
- Intuitively operable software
- One software package for all applications





Marking solutions for your industrial application

Marker

Whether plastic or metal, whether individual marking or series marking – with our marking system, you will always find an optimal and at the same time economical solution for every task.

With MultiCard, MetalliCard, MultiMark or CableLine, you make the right decision.

Your benefits at a glance:

- Fast and economical marking
- Safety-compliant identification
- Laboratory-tested quality



More efficiency by rational processes

Automatic machines

The markets of the future demand further optimisation of installation times to rationalise the crimping processes; increasing automation of the individual steps is required.

With the intelligent combination of versatility and functionality, our machines enable efficient processing of conductor materials.

Your benefits at a glance:

- Increased efficiency due to automation
- Robustness and superior longevity
- Precision and repeat accuracy
- Modular assembly system





Optimal illumination for cabinet and field application

Industry light

The durable, space-saving and powerful LED lights meet the highest requirements in switch cabinets and applications in harsh environmental conditions.

Thanks to the robust housing, wide cone of light and uninterruptible power supply, Weidmüller industrial lights offer a ready-to-fit-solution for lighting, emergency lighting and power supply.

Your benefits at a glance:

- Full power in an instant
- Powerful and energy efficient
- Low sensitivity to external influences



Assembly

Our assembly services for more focus
on your core business



www.weidmueller.com/assembly



Proven solutions for your enclosure applications

Klippon® Protect

With Klippon® Protect, you can choose from a wide range of universal and application-specific enclosures. The enclosures cover all relevant approvals required for use in industrial or explosive risk zones.

The flexible Klippon® Protect enclosure system is the perfect addition to our Klippon® Connect range of terminal blocks. Rely on our enclosures that are optimised for your requirements and provide excellent protection.

Your benefits at a glance:

- Individual or standardised assembled enclosures
- Advice with application expertise and industry know-how
- Innovative software and assembly services
- Perfectly tailored to your needs





Ready-to-connect cables for every requirement

Custom cable assemblies

Requirements of modern machines and plants are increasingly specialised. The consequence is increasingly modular concepts that can be flexibly adapted to new requirements. Standard combinations as well as customer-specific cabling solutions, which are available quickly and guarantee a reliable transmission of power, signals and data, are required for the implementation.

Consisting of either standardised or specific connecting lines – Weidmüller provides you with the optimal solution for every cabling project.

Your benefits at a glance:

- Universal connectivity from IP20 to IP6x
- Reduction of installation costs to a minimum
- Customised cable lengths, connecting plugs, markings or colours





Produce faster with higher flexibility and efficiency

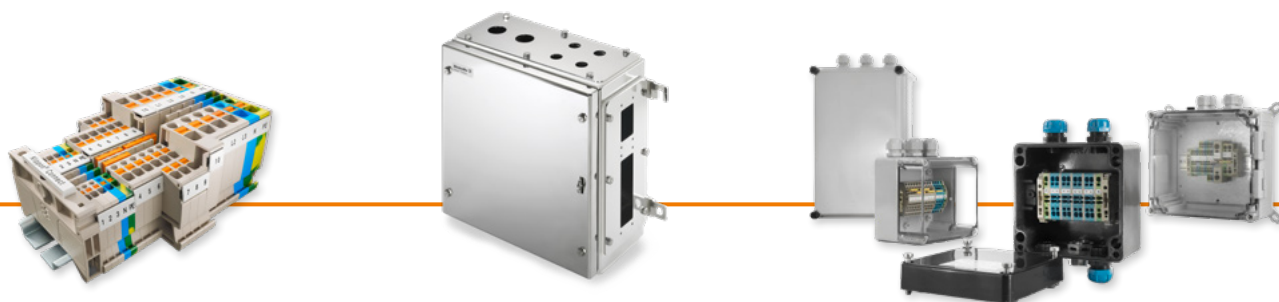
Fast delivery service

Simply configure your assembled terminal rails, empty enclosure or assembled enclosure and it will be ready for dispatch after five or ten days depending on the service level selected. Get quotes around the clock and in minutes, including part numbers that can be ordered directly – 24 hours a day, seven days a week. Planning and configuration with the Weidmüller Configurator (WMC) are the key to consistent processes.

Simple operation, clear design and integration into your engineering workflows from planning with CAE to documentation make configuration simple, safe and convenient.

Your benefits at a glance:

- Significant minimisation of purchasing and storage costs
- Avoidance of assembly errors and increased reliability
- Individual terminal strips and enclosures from batch size 1



Customised solutions

Coming together to create the future



www.weidmueller.com/solutions



Solving decentralised automation tasks economically

FieldPower®

Function-based decentralisation is to make well-established control cabinet functions such as feed-in switching, protection and monitoring in the field. Weidmüller's FieldPower® system enables you to plan, install and operate decentralised plants and automation designs.

Our modular system is the ultimate economical solution for almost any decentralisation task – with flexible enclosure variants, cost-effective wiring and a wide range of functions.

Your benefits at a glance:

- Connecting automation and digitalisation
- Simple installation of IP20 components
- Modular principle of identical parts
- Range of combination options

Optimise your energy consumption

Energy management solutions

Energy management is a triad of recording all relevant energy consumption data, analysing the information obtained and comprehensive consulting on possible saving potential.

We at Weidmüller see the development of an energy management system as a holistic task which combines expert advice with intelligent hardware and software solutions to form a strong unit. With ResMa® resource management software for process and energy optimization, you can improve your processes with the intelligent energy management that can be combined to Industrial IoT.

Your benefits at a glance:

- Continuous and reliable monitoring
- Detect residual currents
- Eliminate insulation faults in time
- Standard-compliant monitoring of power quality





Operate photovoltaic systems economically and efficiently

Photovoltaic solutions

Large photovoltaic systems as well as rooftop systems are associated with enormous costs and risks for owners and operators. The goal is a long-term return on investment. Total cost of ownership is therefore a critical success factor.

Weidmüller offers a wide range of combiner boxes, monitoring solutions and components for large-scale PV projects and rooftop systems to meet your individual requirements.

Your benefits at a glance:

- Protecting your investment
- Comprehensive portfolio
- Global project support by PV specialists
- Many years of industry experience

Elevate your blade performance

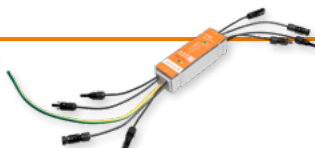
Expert condition monitoring for onshore and offshore

Protecting the investment and optimising the energy yield are the top priorities when operating wind turbines. If the rotor blades suddenly come to a stop because of unexpected damage, this can mean longterm yield loss. Small anomalies, such as broken screws or defective blade bolts, can escalate undetected into massive damage, which is why it is important to constantly monitor the large components of the system.

The BLADEcontrol® rotor blade monitoring, TwinCap® bolt monitoring for blade bearings and BOLTcontrol bolt breakage detection systems from Weidmüller enable this.

Your benefits at a glance:

- Saves the investment through reliable damage detection
- Security for planning and operation through early recognition of deviations
- Optimisation of maintenance plans based on condition and operational data
- Global footprint of already implemented systems and Weidmüller service locations





Sustainable transformation of energy and industrial processes

Solutions for hydrogen

Weidmüller offers customer-specific solutions for the digitalisation and monitoring of your hydrogen plant, from electrolyzers to fuel cells and hydrogen refuelling stations. Rely on precise stack monitoring, safe automation and certified connectivity to make your processes more efficient and secure.

With our products and extensive experience, we actively support the process industry in developing and building sustainable solutions for hydrogen production. We place a special focus on modularisation to ensure a fast and successful ramp-up of the hydrogen industry.

Your benefits at a glance:

- Specialised know-how from electrical connectivity to the cloud
- Experience and industrialisation expertise
- Certification competence (e.g. Ex, IECEx)





The easy way "from data to value" Our Industrial IoT portfolio

The way to Industrial IoT does not have to be complicated. Whether you need access to valuable data, or want to offer new, data-driven services – we pave the easy way "from data to value".

Our comprehensive and cutting-edge IIoT portfolio is suitable for both greenfield and brownfield applications. We offer components and a comprehensive modular system from data acquisition, data preprocessing and control to data communication and data visualization and analysis. Our portfolio covers hardware, software, cloud applications and the associated services.

Your benefits at a glance:

- Easy and fast retrofitting of IoT solutions
- Open and web-based engineering
- Better positioned for the future



Optimize your automation with u-mation Easy and Industrial IoT ready

u-mation is characterised by flexibility to meet today's requirements. The future-proof u-mation portfolio consists of powerful controllers, modular I/O system, simple visualisation systems and customised software as well as engineering tools.

u-mation offers you a consistent portfolio across the 4 levels of the Industrial IoT: data acquisition, data pre-processing, data communication, up to data analysis. Ready for the future of automation. u-mation – More Performance. Simplified.

Your benefits at a glance:

- Simple in use
- Strong partnerships
- Future-proof portfolio





Creating flexible edge connections to the IIoT and automation

Operating system u-OS

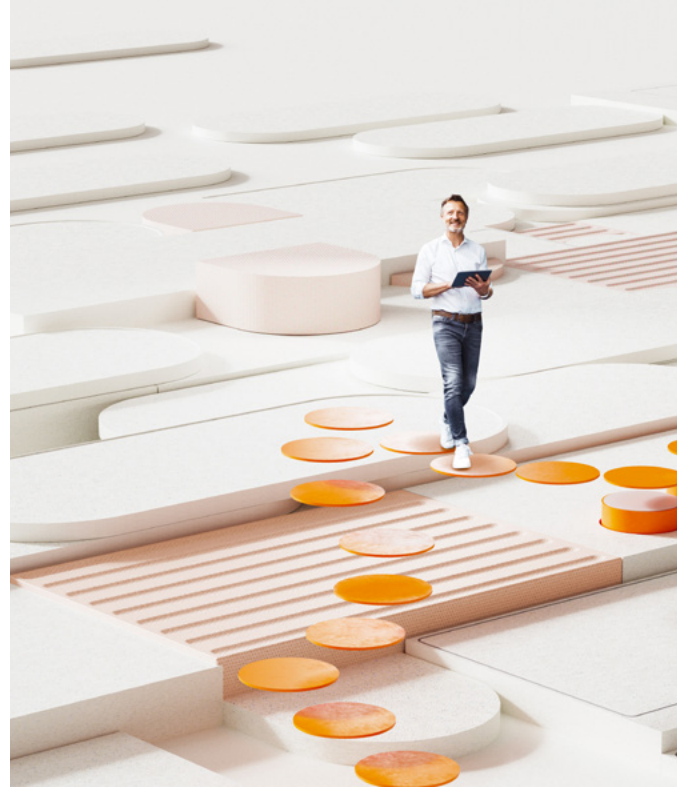
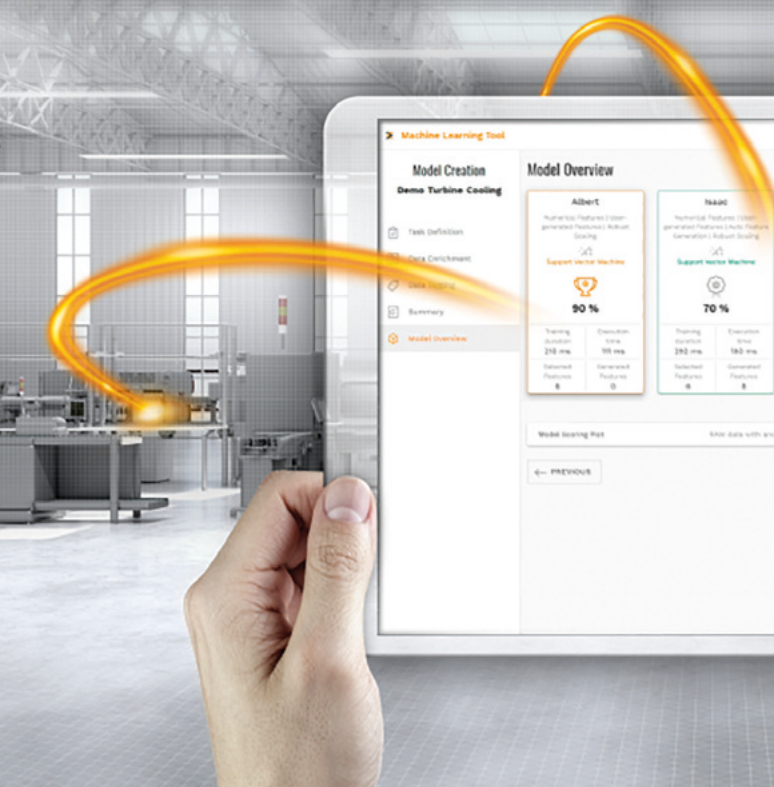
u-OS enables efficient data pre-processing and precise control directly to the machine. It is expandable and offers web-based system composition.

This gives you access to the entire software landscape of Weidmüller and connected partner networks. u-OS connects to any hardware, to any software and to any cloud.

Your benefits at a glance:

- Open for the future – open interfaces at all levels
- Flexible. u-OS is extensible and allows adaptation to individual needs
- Use of established open standards makes u-OS independent and future-proof





Make your machines smart Industrial Analytics

Weidmüller's Industrial Analytics offer stands for application-oriented AI applications that help you to detect and classify anomalies in order to effectively reduce downtimes. Through predictive maintenance, you can plan service intervals in a targeted manner, as and when required.

What is more, you can make reliable predictions about the quality of your products, based on seamless recordings of sensor, condition and process data.

Your benefits at a glance:

- 100 % security for your data
- A strong partner with industry expertise
- Complete solutions from a single source



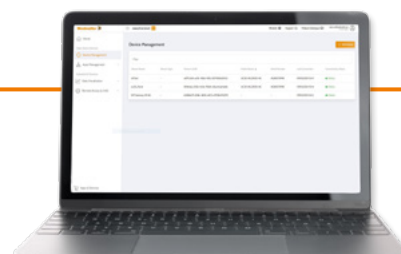
The easy way to digital services throughout the product lifecycle easyConnect

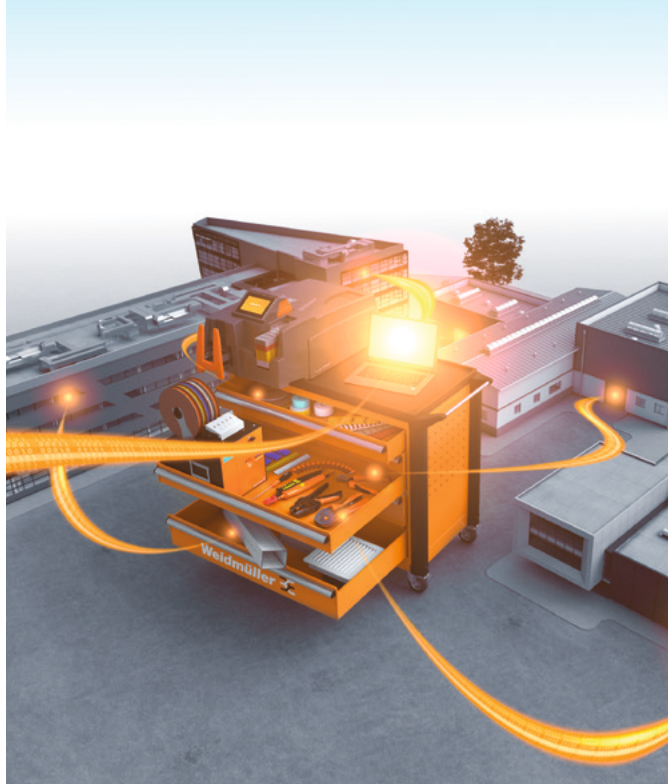
easyConnect is your ticket to the world of digital services and the industrial IoT. You design, install and operate – easyConnect adds value to your processes and products. The integrated, modular and scalable offering can be easily tailored to your individual use case.

Choose your individual solution from our growing range of digital services – configure your hardware, manage your software rollouts, remotely access your machines, monitor your data, and much more. With easyConnect, you can unleash the full potential of innovation for you and your customers – anytime, anywhere, with an intuitive interface and personalised support.

Your benefits at a glance:

- Location-independent access and intuitive operation
- Central, cloud-based platform for end-to-end use cases
- Modular structure and scalable services





Optimise your panel building processes

Workplace solutions

With Weidmüller, you have the perfect partner at your side to support you in all phases of panel building, from planning to installation to operation, with optimally coordinated solutions for your workshop.

Based on years of experience in panel building, we will enable you in speeding up your work processes and increasing your quality through effective utilisation of our comprehensive portfolio.

Your benefits at a glance:

- 80 % faster and safer processes
- 100 % premium quality
- Increased productivity

Expert knowledge for cabinet building

Connectivity Consulting

Together, we will make your cabinet building future-proof! Our team of engineers, in collaboration with your experts, analyzes each individual step of your workflow, from planning to commissioning. Together, we precisely identify the interfaces and processes that offer potential for optimization.

With an external perspective, our extensive expertise, and the aid of various Lean management tools, we develop customized solutions for your requirements and assist you in implementing the measures on-site – your opportunity to remain competitive in the future and counteract the shortage of skilled workers.

Your benefits at a glance:

- Optimization of your work processes
- Extensive practical experience
- Unbiased view of your processes
- Growing together





Boost Your Efficiency from Engineering to Production

Weidmüller Configurator

With more than 14,000 digital articles at your fingertips, the WMC empowers you to configure, combine, and tailor solutions across all major product categories.

Your benefits at a glance:

- **Broad Product Range:** Configure and combine terminal strips, terminal boxes & Ex, and heavy-duty connectors (HDC)
- **Product Intelligence:** Automatically suggests compatible accessories and components
- **Documentation:** Generate PDFs, 3D STEP files, and BOMs with one click
- **ECAD Integration:** Import, enrich, and export designs seamlessly
- **Flexible Import:** Use simple CSV files from any source



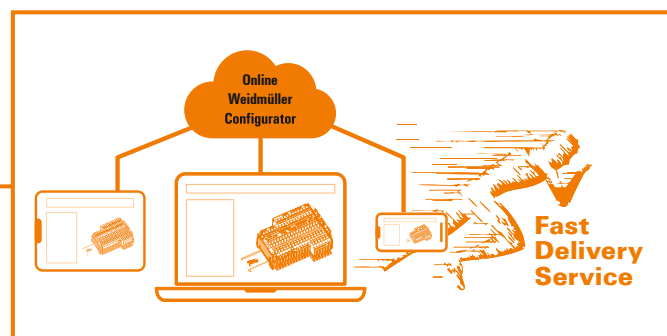
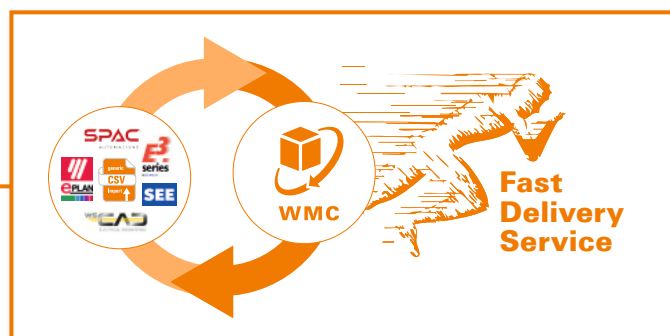
Experience the Future of Digital Engineering

Weidmüller Online Configurator

Take advantage of the new online version of our Weidmüller Configurator that make working with the WMC fast, intuitive, and collaborative.

Your benefits at a glance:

- **Quick Start:** No updates or approvals needed – ready to use in your browser instantly
- **Intuitive Operation:** User-friendly and suitable even for less experienced users
- **Seamless Collaboration:** Easily share configurations via link – with read or edit permissions
- **Smart Optimization:** Reduce installation width or switch connection technology with a click – e.g., to PUSH IN or SNAP IN
- **Convenient Transition:** Existing WMC configurations can be directly transferred via cloud upload





The network infrastructure for the Industrial IoT

Single Pair Ethernet

The increasing level of digitalisation in industrial plants requires a further development of existing Ethernet cabling. Especially for sensors and local modular control units, conventional wiring concepts can no longer meet the new requirements in terms of space requirements and installation effort.

Weidmüller and partners from the field of electrical connectivity all rely on the innovative Single Pair Ethernet technology when developing new industry standards.

Your benefits at a glance:

- Easy to install
- Noticeable reduction in space and weight
- High robustness
- Long cable lengths with extremely compact design types



Our expertise for your requirements

Service connects – worldwide



Automation technology functions are becoming more complex in a globally-oriented world facing ambitious targets in terms of energy efficiency and smart production. We are your equal partners for the best connections in Industrial Connectivity.

Our personal support answers all questions reliably and expertly. During planning, installation or operation our service and support offer is your best companion.

In short: Weidmüller's global service combines our expertise with your requirements.



Your way to our service
www.weidmueller.com/service

Expand the possibilities of our products

Our Support Center - the answer is just a click away



Receive fast and intuitive support to get the most out of our products in your application. In our new Support Center you can search or navigate to the many application notes, product information, video tutorials or software downloads of our products. It is also possible to create a technical Service Request in the Support Center and check the current status at any time.

- **Everything at a glance** – One central support hub, where all relevant information is available
- **Powerful search** – Provides filter functions for various types of information and products
- **Navigation through product hierarchy** – Navigation to specific products through our product hierarchy
- **More than 40,000 downloads** – Application notes, video tutorials, templates and examples, user documentation, engineering data, ...
- **Personal contact** – Direct access to your personal technical contact in your country
- **Quick help via Service Request** – Create a service request to get quick technical help and check the current status and the solution provided



Explore the world of our new Support Center
support.weidmueller.com

Weidmüller – Your partner in Smart Industrial Connectivity

As experienced experts we support our customers and partners around the world with products, solutions and services in the industrial environment of power, signal and data. We are at home in their industries and markets and know the technological challenges of tomorrow. We are therefore continuously developing innovative, sustainable and useful solutions for their individual needs. Together we set standards in Smart Industrial Connectivity.

We cannot guarantee that there are no mistakes in the publications or software provided by us to the customer for the purpose of making orders. We try our best to quickly correct errors in our printed media.

All orders are based on our general terms of delivery, which can be reviewed on the websites of our group companies where you place your order. On demand we can also send the general terms of delivery to you.

Weidmüller Interface GmbH & Co. KG
Klingenbergstraße 26
32758 Detmold, Germany
T +49 5231 14-0
F +49 5231 14-292083
www.weidmueller.com

Personal support can
be found on our website:
www.weidmueller.com/contact

Made in Germany

09/2025/SMM