

## EPLAN – WMC Interface

### Shortdescription

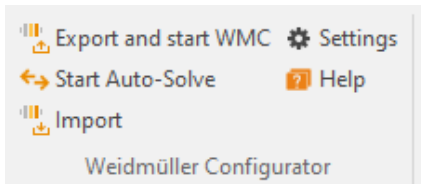
The **Weidmüller Configurator - EPLAN interface** enables you to exchange your EPLAN projects and offers many benefits to speed up your process.



### Table of content

Usability .....	2
Release notes .....	4
FAQs .....	5

## Usability



After installation of the WMC-EPLAN interface, a “Weidmüller” tab will be created in the EPLAN ribbon with the possibility to export and import a configuration, choose you settings and view the interface short manual.

### Export and start WMC

To export your configuration you can choose between two options depending on your use case:

#### Terminal strips

1. To export **terminal strips**, select the desired terminal strip(s) or node(s) in the terminal strip navigator and click on “Export and start WMC”.

#### Layout space

2. To export **mounting rails**, select the desired mounting rail(s) or node(s) in the layout space navigator and click on “Export and start WMC”.

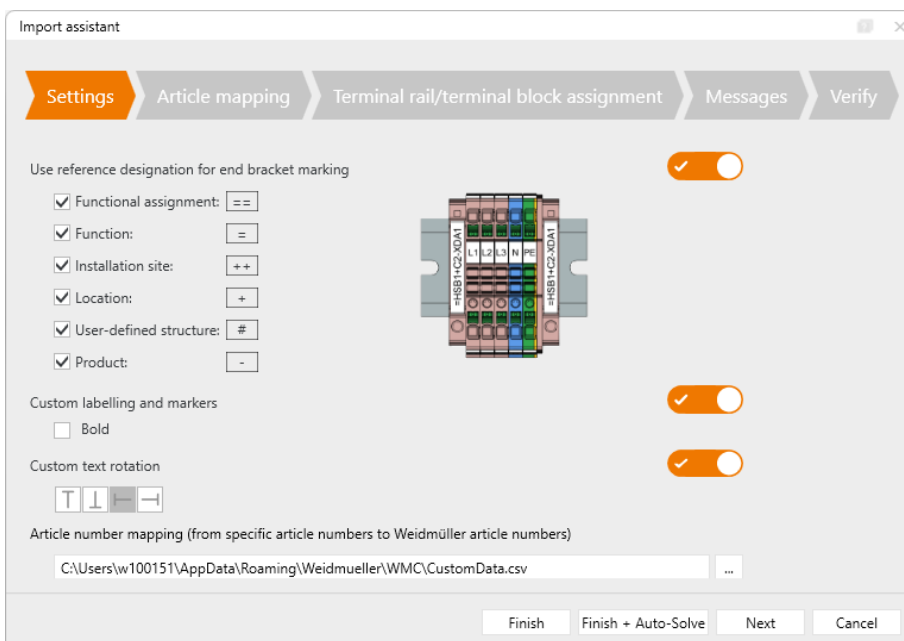
### Import

The most common way to import a configuration is to click on “Export...” in the interface ribbon of the WMC. This will transfer your project automatically into the matching entity of EPLAN. If no matching project is available, a list of the opened projects of the entity will be shown, where you still have the option to import a configuration.

The second option is to use the Import button in the ribbon and import a saved file with the suffix \*.WmcToEplan.

### Start Auto-Solve

To use the Auto-Solve function, select the terminal strips that need to be enriched and click on “Start Auto-Solve.” This will open the WMC Import Assistant. By clicking “Finish + Auto-Solve,” the WMC will automatically export all necessary additional parts back to EPLAN.



If you choose “Finish,” all markers and bridges will be included in the export.

Alternatively, by clicking “Next,” you can manually select the desired actions before exporting the data directly back to EPLAN.

## Settings

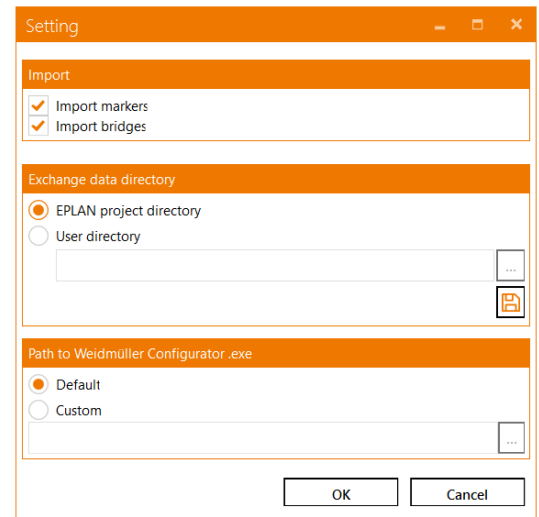
The settings allow you to control the export and import properties.

In the 'Import' section, you can select which accessory items you want to import.

All accessories are selected by default.

In the 'Exchange data directory' section, you can specify the data exchange path and save a file manually. The default value is the EPLAN project directory.

In the 'Path to Weidmüller Configurator.exe' field you can set the installation folder of the WMC. This setting is recommended when using Citrix.



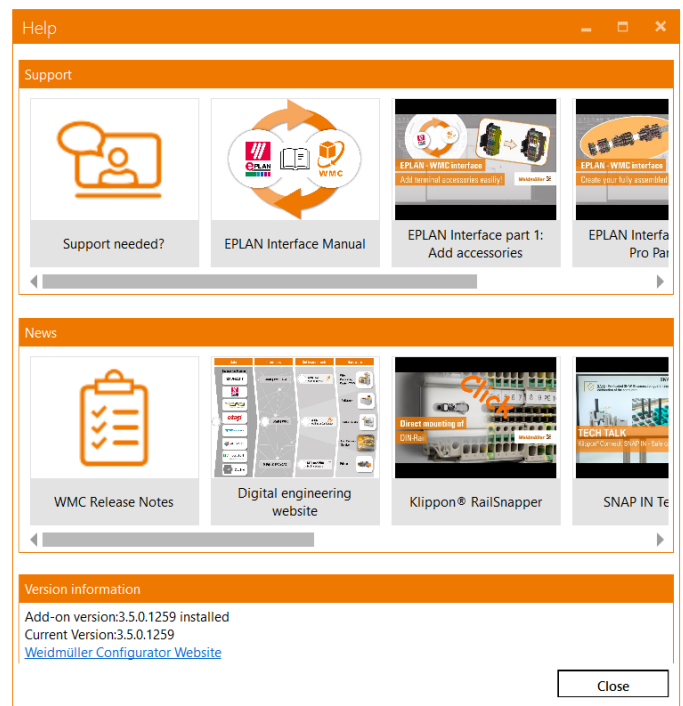
## Help

In this window you find support and news regarding the WMC, the interface and some relevant products.

In the "Support" area you can book a meeting with our experts, download the manual, or watch explanation videos.

In the "News" field you can find some links of the news, relevant software, and products.

The "Version information" section displays the currently installed add-on version, if available the link to a newer add-on version and the link to the WMC homepage.

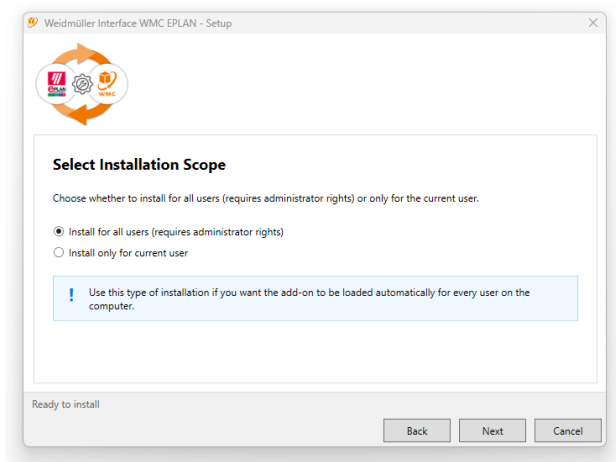


## Release notes

**Add-on version 3.5.0.1259**

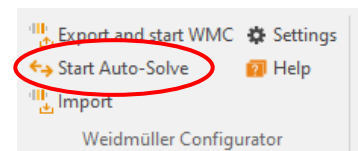
### Highlights:

**New setup management with the possibility of stand-alone installation and company add-ons**



### **Automated data exchange with a new button**

The new 'Start Auto-Solve' button enables faster data exchange between EPLAN and the WMC by automating the process in the background.



### Extension:

New message window for all articles with missing handlepoints for Pro Panel Export

### Bug fixes:

Improved Pro Panel Export when using standardized fields.

Consideration of bridges when exporting from schema planning and Pro Panel

Correction of rotation after EPLAN restart for Pro Panel Export

## FAQs

**Q:** The “Export” button is grayed out – why?

**A:** To enable the export functionality you have to open a project.

**Q:** The order of terminals in the WMC does not match to my expectations of the EPLAN project.

**A:** The order is not depending on the designations of the terminals, but is defined in the terminal strip of EPLAN. By opening the terminal strip navigator and editing a single terminal strip, there you can change the sequence of single terminals.



**Q:** I don't want to import markers or bridges into my EPLAN project from the WMC?

**A:** On settings in the section “Import” you can find and disable markers and/or bridges.

**Q:** I skipped the Update, where can I find the new Add-on version?

**A:** On settings in the section “About” will appear a link with the new Add-on version.

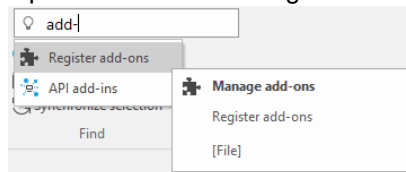
**Q:** The interface is not available after the installation – what can I do?

**A:** The correct installation procedure for an EPLAN Add-on is:

1. Close EPLAN
2. Install New Add-on version
3. Open EPLAN
4. Close EPLAN
5. Open EPLAN again – Interface is ready to use

If the interface is not available yet:

6. Open the Add-on management



7. Unregister the current WMC Add-on and confirm with “OK”
8. Open the Add-on management again
9. Register the current WMC Add-on and confirm with “OK” – Interface is ready to use

If the interface is not available yet:

10. Close EPLAN
11. Open EPLAN again – Interface is ready to use

If you need technical support, don't hesitate to contact us [wmc@weidmueller.com](mailto:wmc@weidmueller.com)